



Bruksanvisning för bordslampa solcell

Bruksanvisning for bordlampe solcelle

Instrukcja obsługi słonecznej lampki stołowej

User Instructions for Solar Cell Table Lamp

422-457



SV Bruksanvisning i original
NO Bruksanvisning i original
PL Instrukcja obsługi w oryginale
EN User instructions in original

Läs bruksanvisningen noggrant innan användning!

Spara bruksanvisningen för framtida referens.

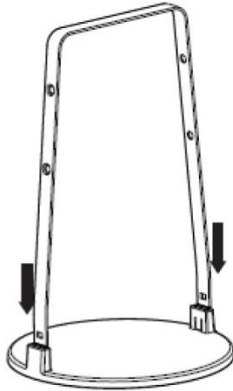
TEKNISK DATA

Ljuskälla:

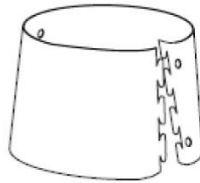
1 st. lysdiodlampa

MONTERING

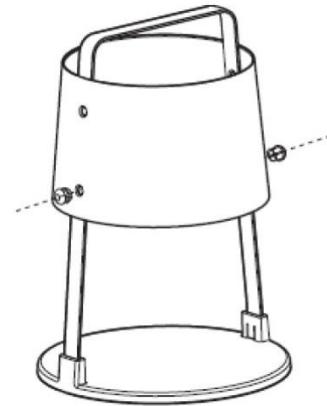
1



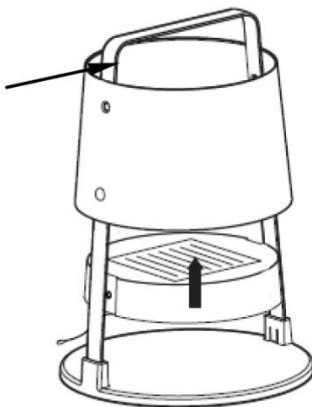
2



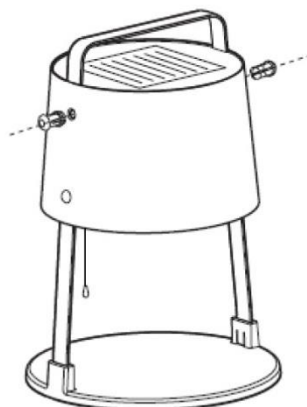
3



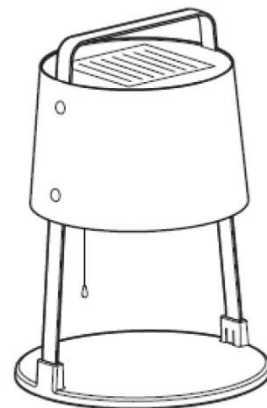
4



5

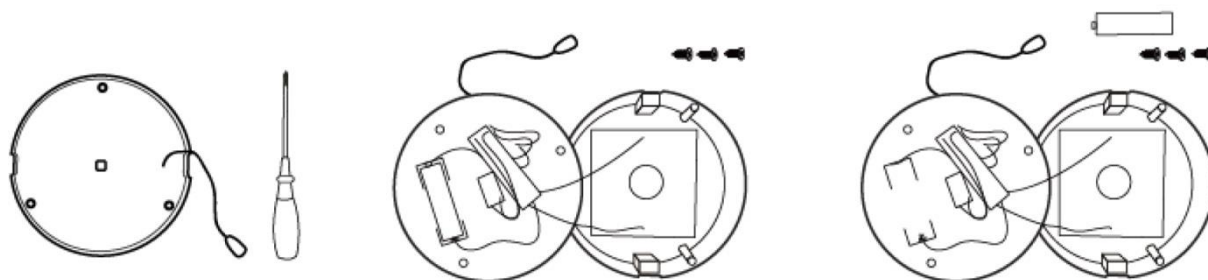


6

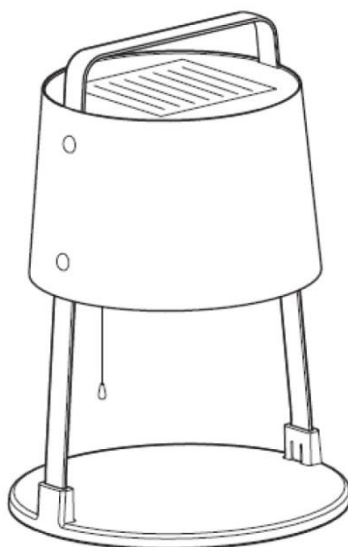


HANDHAVANDE

Batteribyte



VARNING! Blanda inte gamla och nya batterier eller batterier av olika typ. Montera inte nära värmekällor, som radiatorer, grillar eller liknande.



Rätten till ändringar förbehålles. Vid eventuella problem, kontakta vår serviceavdelning på telefon 0200-88 55 88.

Jula AB, Box 363, 532 24 SKARA
www.jula.se



Värna om miljön!

Får ej slängas bland hushållssopor!
Denna produkt innehåller elektriska eller elektroniska komponenter som skall återvinnas.
Lämna produkten för återvinning på anvisad plats t.ex. kommunens återvinningsstation.

Les bruksanvisningen nøye før bruk!

Ta vare på bruksanvisningen for fremtidig referanse.

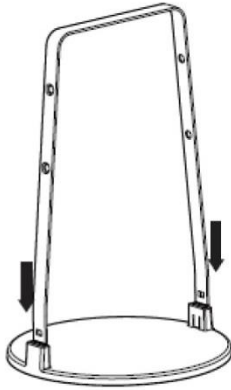
TEKNISKE DATA

Lyskilde:

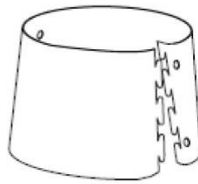
1 stk. lysdiodelampe

MONTERING

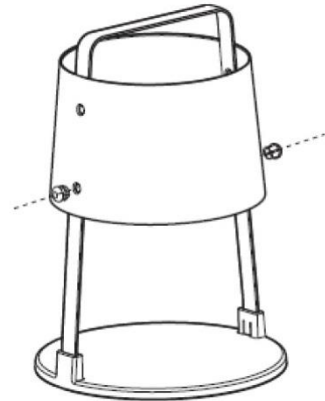
1



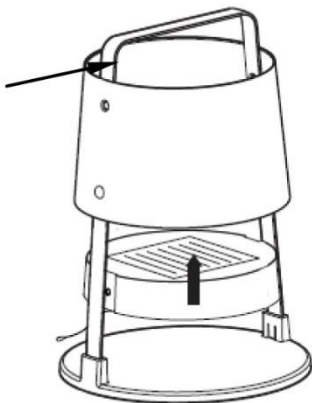
2



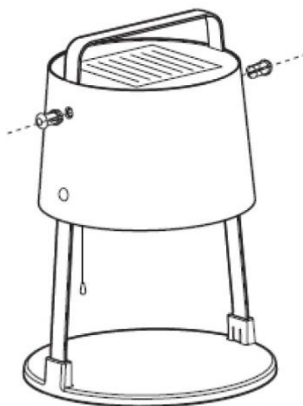
3



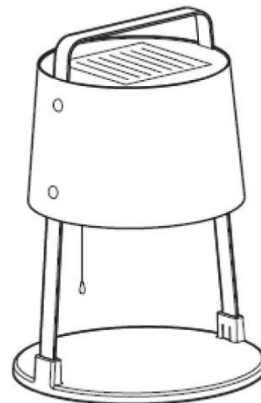
4

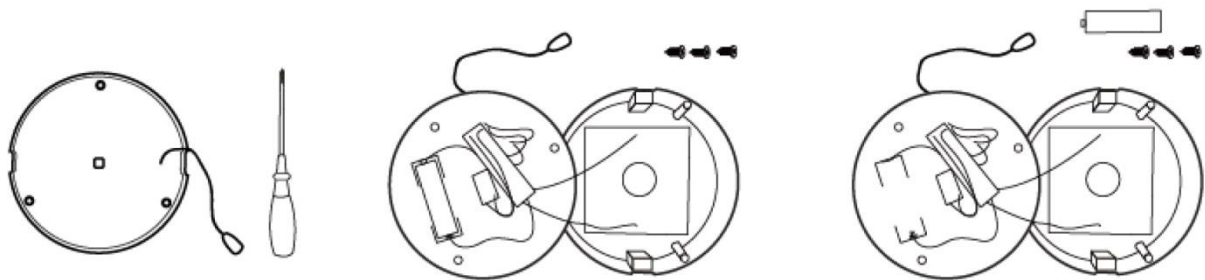


5

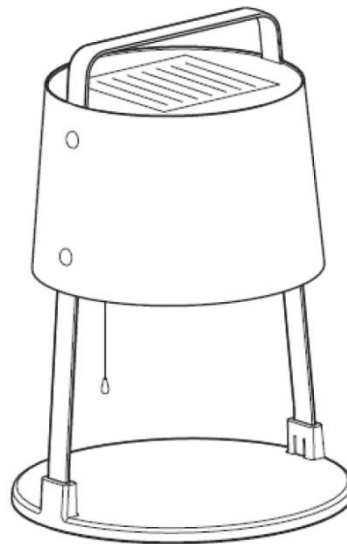


6



Bytte batteri

ADVARSEL! Ikke bland gamle og nye batterier eller batterier av forskjellig type. Må ikke monteres i nærheten av varmekilder, som radiatorer, griller eller liknende.



Med forbehold om endringer. Ved eventuelle problemer kan du kontakte vår serviceavdeling på telefon 67 90 01 34.

Jula Norge AS, Solheimsveien 6–8, 1471 LØRENSKOG
www.jula.no

**Verne om miljøet!**

Må ikke kastes sammen med husholdningsavfallet!
Dette produktet inneholder elektriske eller elektroniske komponenter som skal gjenvinnes.
Lever produkt till gjenvinning på anvist sted, f.eks. kommunens miljøstasjon.

Przed użyciem uważnie przeczytaj instrukcję obsługi!

Zachowaj niniejszą instrukcję obsługi w celu przyszłego użycia.

DANE TECHNICZNE

Żarówka:

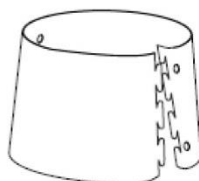
1 żarówka diodowa

MONTAŻ

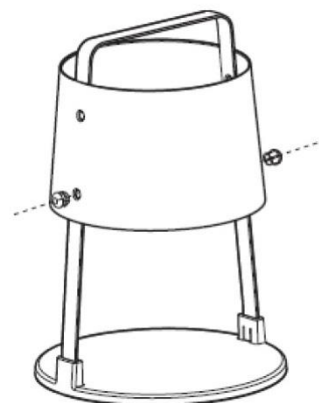
1



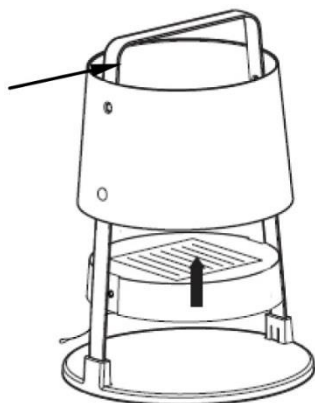
2



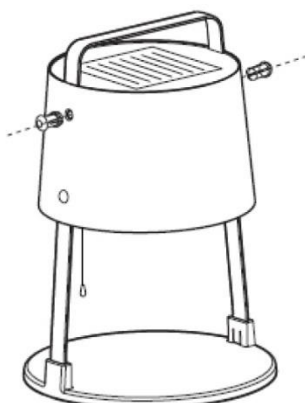
3



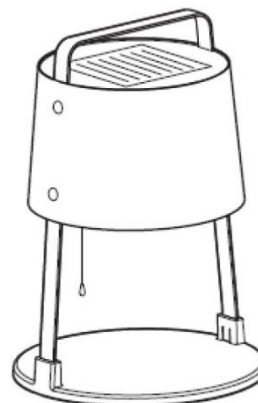
4



5

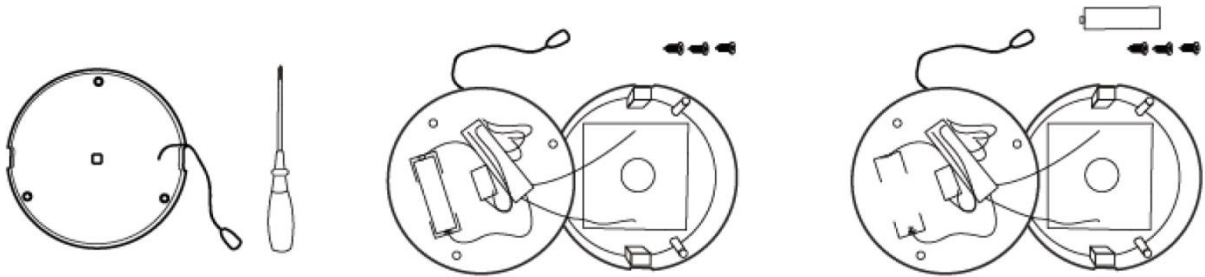


6

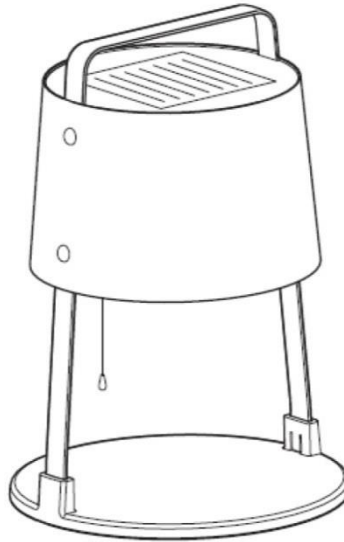


OBSŁUGA

Wymiana baterii



OSTRZEŻENIE! Nie łącz starych i nowych baterii ani baterii różnego typu.
Nie montuj w pobliżu źródeł ciepła, np. kaloryfera, grilla itp.



Z zastrzeżeniem prawa do zmian. W razie ewentualnych problemów skontaktuj się telefonicznie z naszym działem obsługi klienta pod numerem 801 600 500.

Jula Poland Sp. z o.o., ul. Malborska 49, 03-286 Warszawa, Polska
www.jula.pl



Dbaj o środowisko!

Nie wyrzucaj zużytego produktu wraz z odpadami komunalnymi! Produkt zawiera elektryczne lub elektroniczne komponenty mogące być zagrożeniem dla środowiska. Produkt należy oddać do odpowiedniego punktu składowania lub przynieść go do jednego z sklepów gdzie przy zakupie nowego sprzętu bezpłatnie przyjmimy stary tego samego rodzaju i tej samej ilości.

Read the User Instructions carefully before use.

Save these instructions for future reference.

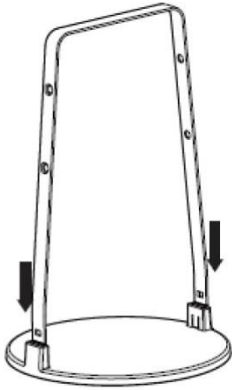
TECHNICAL DATA

Light source:

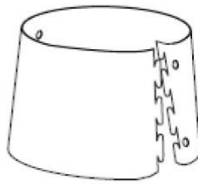
1 LED bulb

ASSEMBLY

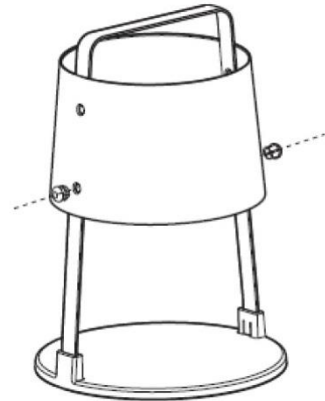
1



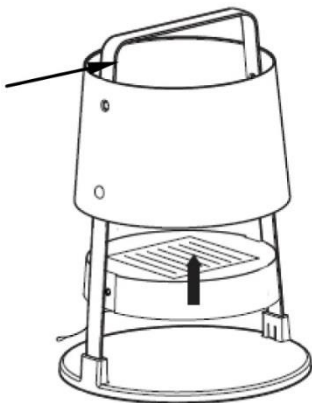
2



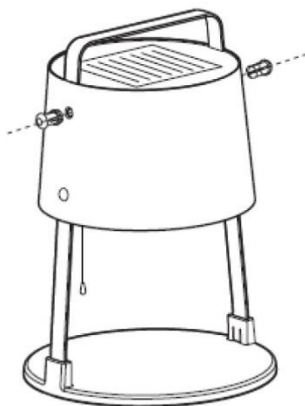
3



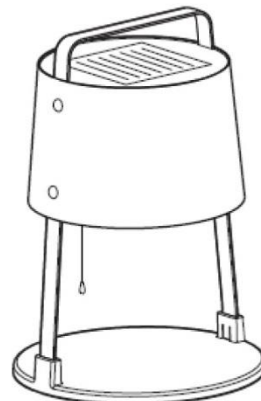
4



5

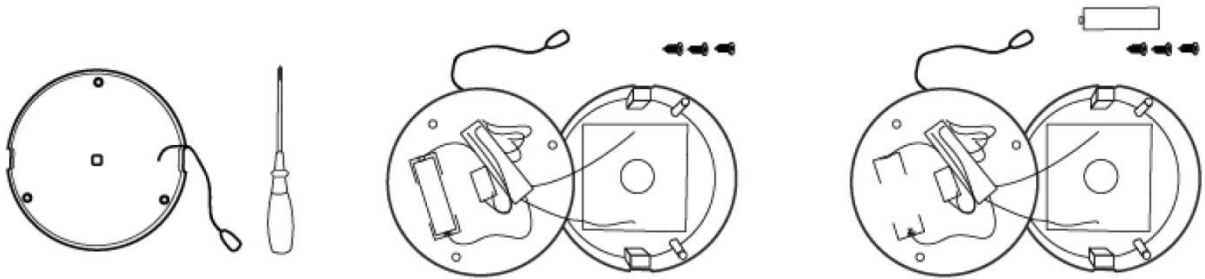


6

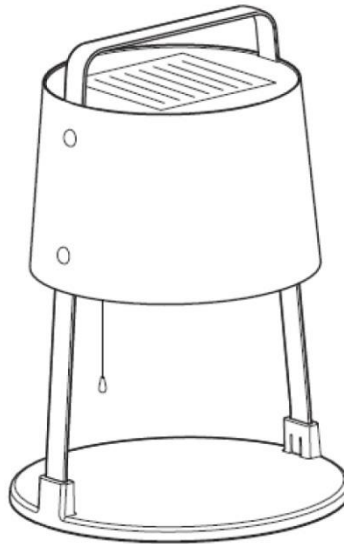


USE


Replacing the battery



WARNING: Do not mix old and new batteries, or different types of batteries.
Do not use near sources of heat, such as radiators or grills etc.



Jula reserves the right to make changes. In the event of problems, please contact our service department.
www.jula.com

	<p>Care for the environment! Must not be discarded with household waste! This product contains electrical or electronic components that should be recycled. Leave the product for recycling at the designated station e.g. the local authority's recycling station.</p>
---	--