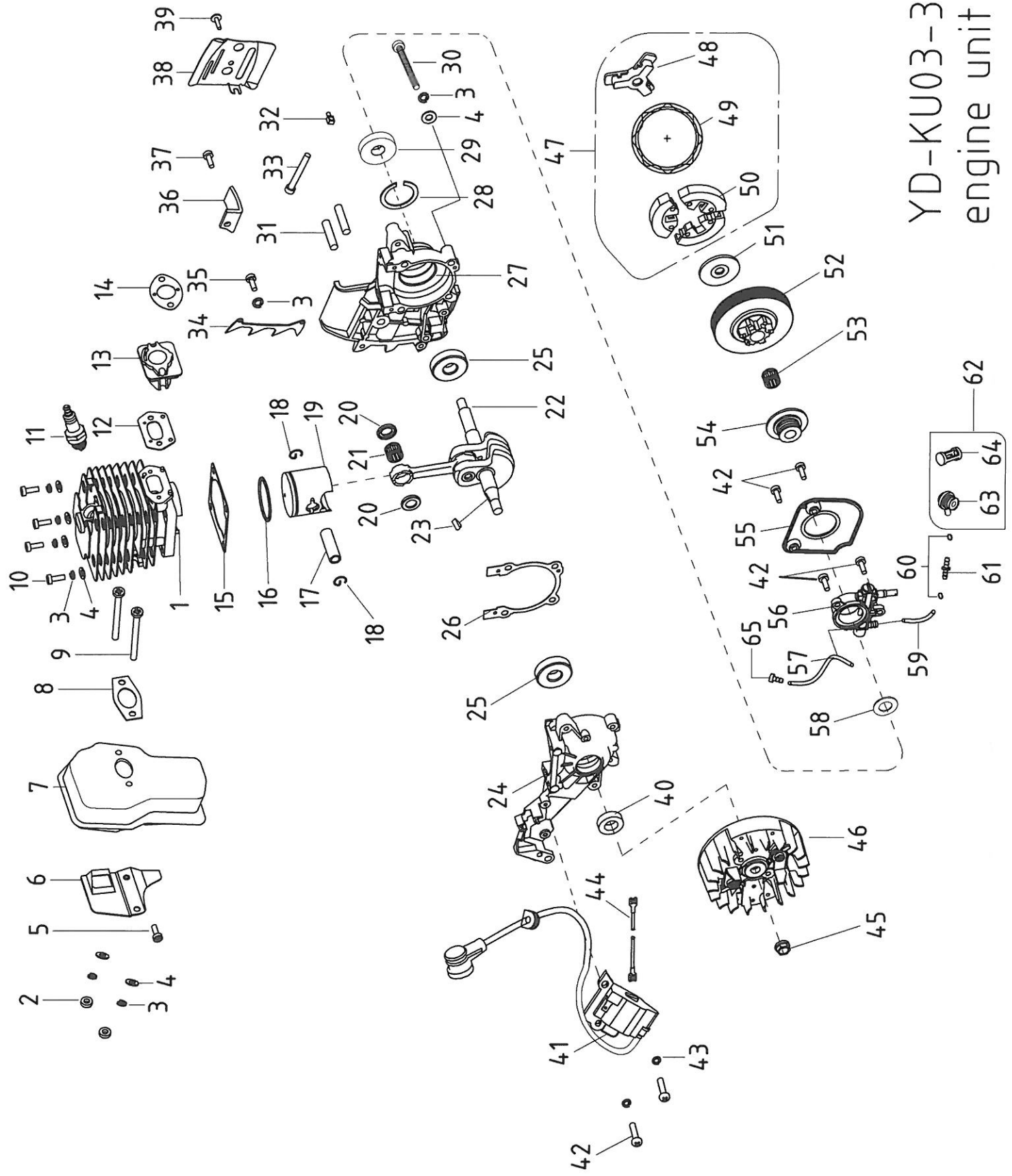


EURO II
YD-KU03-38A Base Unit

BASE UNITE OF YD-KU03-38(A) EURO II				
NO.	PART NO.	Description(En)	QTY	
1	YD38-3.04.00-00	Right cover assembly	1	R021600
2	YD38-3.04.00-16	Screw M5×40	1	
3	YD38-3.04.00-13	pin gland 5×6.3×30	1	
4	YD38-3.04.00-12	heavy brock gland 6.3×9×15	1	
5	YD38-3.04.00-2	front damper	1	
6	YD38-3.04.02-00	heavy block	1	
7	YD38-3.04.00-7	heavy block spring	1	
8	YD38-3.04.00-9	brake torsion rod spring	1	
9	YD38-3.04.00-14	washer 5.2×23×1.2	1	
10	GB/T6185.1	lock- nut M5	1	
11	YD38-3.04.00-6	spring base	1	
12	YD38-3.04.00-5	front guard spring	1	
13	YD38-3.04.00-15	tensioner cover plate	1	
14	GB/T119.2	pin 3×14	1	
15	YD38-3.04.00-4	main level	1	
16	YD38-3.04.00-3	secondary pull-rod	1	
17	GB/T119.2	pin 3×9	3	
18	YD38-3.04.00-11	break control rod	1	
19	YD38-3.04.00-8	brake spring	1	
20	YD38-3.04.00-10	break strap	1	
21	GB/T845	tapping screw ST4.2×9.5	5	
22	YD38-3.04.00-1	break spring cover plate	1	
23	YD38-3.04.01-00	right cover	1	
24	GB/T6177.1	nut M8	2	
25	YD38-3.05.00-2	air filter cover	1	
26	YD38-3.05.01-00	air filter lock nut	1	
27	YD38-3.05.00-6	lock nut washer 15×26×1	1	
28	YD38-5.01.08.00-00	air filter	1	R021599
29	YD38-3.05.00-00	upper cover assembly	1	
29a	YD38-3.05.00-1	upper cover	1	
29b	YD38-3.05.00-8	upper heat isolation plate	1	
29c	YD38-3.05.00-9	side heat isolation plate	1	
30	YD38-3.05.00-5	anti-freeze block	1	
31	YD38-3.05.00-4	shock block	1	
32	GB/T845	tapping screw ST4.8×16	12	
33	YD38-3.05.00-3	idle adjusting guide set	1	
34	YD38-3.00.00-7	dust shield	1	
35	YD38-3.00.00-11	choke lever retaining bracket	1	
36	YD38-3.00.00-10	choke lever	1	
37	YD38-3.02.00-1	bossing	1	
38	YD38-3.02.00-00	starter assembly	1	R021601
39	GB/T845	tapping screw ST4.8×13	1	

40	GB/T96	washer 5	1	
41	YD38-3.02.00-6	start stretching wire3×920	1	
42	YD38-3.02.00-2	start plate	1	R021626
43	YD38-3.02.00-5	start coil-spring	1	
44	YD38-3.02.00-4	start handle	1	
45	YD38-3.02.01-00	start cover	1	
46	GB/T845	tapping screw ST4.8×25	6	
47	YD38-3.00.00-9	dust cover1	1	
48	YD38-3.06.04-00	cushion socket 1	1	
49	GB/T818	screw M5×14	5	
50	YD38-3.06.03-00	cushion socket 2	1	
51	YD38-3.00.00-8	dust cover 2	1	
52	YD38-3.00.00-4	front handle spring	1	
53	YD38-3.00.00-1	front handle	1	
54	YD38-3.00.00-13	torsion rod spring cover plate	1	
55	YD38-3.03.06-00	balancer body assembly	1	
56	YD38-3.03.00-3	balancer root	1	R021607
57	YD38-3.03.00-1	fuel tube	1	
58A	YD38-3.03.00-1A	scavenge tube	1	
59A	YD38-3.03.00-2A	tube root	1	
60	YD38-3.03.00-12	clump weight	1	
61	YD38-3.03.04-00	fuel filter assembly	1	
62	YD38-3.03.01-00	base	1	
63	YD38-3.00.00-5	base spring	1	
64	YD38-3.03.03-2	anti-drop plate	1	
65	YD38-3.03.02-3	packing washer 24×34×1.5	1	
66	YD38-3.03.02-1	petrol cover	1	
67	YD38-3.03.03-3	packing washer 20×30×2	1	
68	YD38-3.03.03-1	oil cover	1	
69	GB/T119.2	pin 5×24	1	
70	YD38-3.01.11.04-00	extinction switch	1	
71A	YD38-3.03.00-4A	fuel pumping bulb2.5×5×175	1	R023982
72A	YD45-4.03.00-13	pump tube	1	R021604
73	YD38-3.03.00-9	trigger control rack	1	R021609
74	YD38-3.03.00-8	trigger torsion rod spring	1	R021608
75	YD38-3.03.00-7	trigger	1	
76	YD38-3.00.00-6	throttle rod	1	
77	YD38-3.03.00-10	handle cover	1	R021610
78	YD38-3.03.00-16	circlip for nozzle	1	
79	YD38-3.03.00-5	vent tube 3.5×6.5×80	1	
80	GB/T845	tapping screw ST4.2×14	1	
81	YD38-3.01.06.00-00	carburetor	1	R021602
82	YD38-3.01.00.02-00	air intake socket	1	
83	YD38-3.01.00.03-00	carburetor screw	2	
84	YD38-3.01.11.03-00	ground conductor	1	

85	YD38-3.06.01-00c	engine base assembly	1	
85a	YD38-3.06.01-00	engine base	1	
85b	YD38-3.06.01-2	engine base heat isolation plate	1	
86	YD38-3.03.05-00	fuel tube assembly	1	R021605
87	YD38-3.03.02-00	petrol cap assembly	1	R021611
88	YD38-3.03.03-00	oil cap assembly	1	R021612
89	YD38-3.08.00-00	Accessories	1	
90	YD38-3.07.00-00	Bar cover	1	
91	YD38-3.07.02-00	chain	1	
92	YD38-3.07.01-00	guide bar	1	
93	YD38-3.08.01-00	plug wrench	1	
94	YD38-3.08.04-00	file	1	
95	YD38-3.08.03-00	user's manual	1	



YD-KU03-38A
engine unit

编号	代号		数量	
1	YD38-3.01.00-1	cylinder body	1	
2	GB/T6185.1	nutM5	2	
3	GB/T93	washer 5	11	
4	GB/T97.1	washer 5	10	
5	GB/T2672	screw M5×14	1	
6	YD38-3.01.09.00-1	silencer cover plate	1	R021613
7	YD38-3.01.09.00-00	silencer body	1	R021614
8	YD38-3.01.00-6	silencer sealing plate	1	
9	YD38-3.01.00-10	muffler connecting screw	1	
10	GB/T6191	screw M5×20	4	
11	YD38-3.01.11.05-00	spark plug NHSP LD L8RTF	1	R013479
12	YD38-3.01.00-7	air intake tube sealing plate	1	
13	YD38-3.01.00-3	air intake tube	1	
14	YD38-3.01.00-8	carburetor sealing plate	1	
15	YD38-3.01.00-5	cylinder sealing plate	1	
16	YD38-3.01.03.00-2	piston ring	1	
17	YD38-3.01.03.00-3	piston pin	1	
18	YD38-3.01.03.00-4	piston pin circlip	2	
19	YD38-3.01.03.04-00	piston	1	
20	YD38-3.01.03.00-5	needle bearing ring	2	
21	YD38-3.01.03.02-00	needle bearing 10×14×11	1	
22	YD38-3.01.03.01-00	crank shaft components	1	
23	GB/T1099	semicircular key 3×3.5×10	1	R021625
24	YD38-3.01.01.00-1	left crank case	1	
25	GB/T276	bearing 6201 grade D 12×32×10	2	
26	YD38-3.01.01.00-3	case body sealing plate	1	
27	YD38-3.01.01.00-2	right crank case	1	
28	GB/T893.1	shield ring 32	1	
29	YD38-3.01.01.01-00	oil seal 12×32×5.5	1	
30	GB/T6191	screw M5×30	4	
31	GB/T900	double-screw bolt AYM8-M8×26-8.8	2	
32	YD38-3.01.00-9	tension block	1	
33	GB/T9074.1	adjust screw M5×48	1	
34	YD45.01.00-21	spike bumper	1	
35	GB/T2672	screw M5×12	1	
36	YD38-3.01.00-15	chain catcher	1	
37	YD38-3.01.00-16	chain catcher screw	1	
38	YD38-3.01.00-4	damper	1	
39	GB/T2672	screw M4×10	1	
40	YD38-3.01.01.02-00	oil seal 12×22×7	1	
41	YD38-3.01.11.01-00	igniter	1	R021616
42	GB/T2672	screw M4×14	6	
43	GB/T93	washer 4	2	
44	YD38-3.01.11.02-00	extinction conductor	1	
45	GB/T6177.2	nut M8×1	1	

46	YD38-3.01.10.00-00	flywheel assembly	1	R021615
47	YD38-3.01.13.00-00	clutch assembly	1	
48	YD38-3.01.13.01-1	retainer	1	
49	YD38-3.01.13.01-3	clutch extension spring	1	
50	YD38-3.01.13.01-2	shoe block	3	
51	YD38-3.01.13.00-2	clutch adjusting washer	1	
52	YD38-3.01.13.00-1	clutch shell	1	R021618
53	YD38-3.01.00.01-6	needle bearing 10×13×13	1	R021619
54	YD38-3.01.00-11	worm	1	R021620
55	YD38-3.00.00-12	cover plate	1	
56	YD38-3.01.15.00-00	oil pump	1	R021621
57	YD38-3.01.00-13	oil outgoing tube 3×6.5×75	1	R021622
58	YD38-3.01.00-12	worm washer 10×18×1	1	
59	YD38-3.00.00-2	oil ingoing tube 3.5×6.5×68	1	R021623
60	YD38-3.00.00-17	oil tube circlip	2	
61	YD38-3.00.00-3	tie-in	1	
62	YD38-3.00.00-16	Base assembely	1	R021624
63	YD38-3.03.00-11	nozzle	1	
64	YD38-3.03.00-12	filter net	1	
65	YD38-3.01.00-14	spray nozzle	1	

RESESERVDELAR TILL 721340 MOTORSÅG MEEC 37,2CC



R013479 TÄNDSTIFT L8RTF NHSP LD



R021599 LUFTFILTER VIT PLAST



R021600 KASTSKYDD KPL



R021601 STARTAPPRAT KPL



R021602 FÖRGASARE KPL



R021603



R021604 BENSINSLANG T PRIMER



R021605 BENSINSLANG KPL M. FILTER



R021606 AVLUFTNING F. TANK



R021607 GUMMIGENOMFÖRING AVLUFTNING



R021608 FJÄDER FÖR GASSPÄRR



R021609 GASSPÄRR PLAST



R021610 PLAST SKYDD ÖVER GASSPÄRR



R021616 TANKLOCK KPL



R021612 OLJELOCK KPL



R021613 FÄSTPLATTA F. LJUDDÄMPARE



R021614 LJUDDÄMPARE



R021615 SVÄNGHJUL (bild från båda sidor)



R021616 TÄNDSPOLE KPL



R021617 KOPPLING KPL



R021618 TRUMKOPPLING



R021619 NÅLLAGER 10X13X13



R021620 PLASTDREV T.OLJEPUMP (bild från båda sidor)



R021621 OLJEPUMP



R021622 OLJESLANG 3x6.5x75mm UTGÅENDE



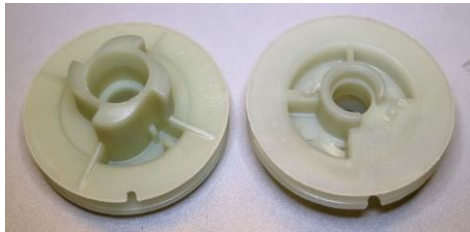
R021623 OLJESLANG 3.5x6.5x68mm INGÅENDE



021624 OLJEFILTER



R021625 KIL 3x3.5x10 FÖR SVÄNGHJUL



R021626 PLASTDREV FÖR START APPARAT



R022270 METALLSKYDD F. KEJDESPÄNNARE



R022271 KEDJESPÄNNARSKRUV /MUTTER/TAPP