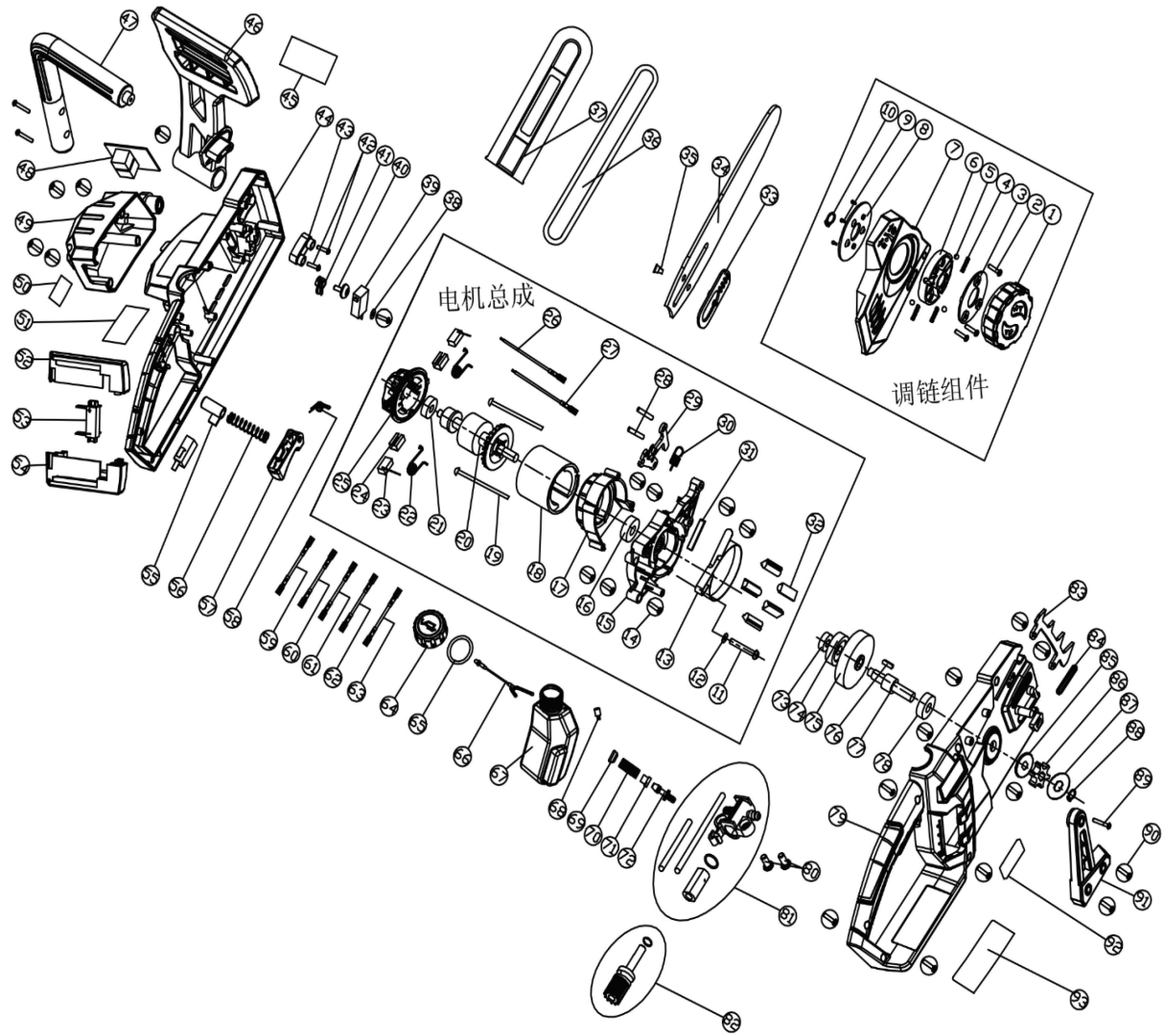


Jula item no 013184



Jula item no 013184

Pos	Parts	QTY	Pos	Parts	QTY
1	Knob	1	46	Protect plate	1
2	Screw	3	47	Front handle	1
3	Knob press plate	1	48	PCB	1
4	Spring	3	49	Back cover	1
5	Steel ball	3	50	Brand label 2	1
6	Knob1	1	51	Spec label	1
7	Bar press plate	1	52	Battery seat upper	1
8	Rotate plate	1	53	Pole seat	1
9	Screw	3	54	Battery seat lower	1
10	Circlip	1	55	Switch side button	1
11	Screw	1	56	Spring	1
12	Gasket 3	1	57	Switch trigger	1
13	Brake belt	1	58	Spring	1
14	Screw	7	59	Inner wire 3	1
15	Motor fixture	1	60	Inner wire 4	1
16	Bearing	1	61	Inner wire 5	1
17	Windproof plate	1	62	Inner wire 6	1
18	Stator	1	63	Inner wire 7	1
19	Stator rod	2	64	Oil tank cap	1
20	Rotor	1	65	O type ring	1
21	Bearing	1	66	Oil tank cap hold line	1
22	Torsion spring	2	67	Oil tank	1
23	Brush	2	68	Oil tank rubber nozzle	1
24	Brush sleeve	2	69	Strainer plug	1
25	Brush holder	1	70	Spring	1
26	Brush line 1	1	71	Seal ring	1
27	Brush line 2	1	72	Oil tank nozzle	1
28	Pillar pin	2	73	Bearing	1
29	Hinge	1	74	Big gear	1
30	Spring	1	75	Brake wheel	1
31	Wool felt	1	76	Flat key	1
32	BAKELITE column	5	77	Output spindle	1
33	Adjusting plate	1	78	Bearing	1
34	Bar	1	79	Right housing	1
35	Rivert	1	80	Screw	2
36	Chain	1	81	Oil pump housing assembly	1
37	Bar sleeve	1	81-1	Oil pump housing	1
38	Gasket	1	81-2	Rubber gasket	1
39	Micro switch	2	81-3	Oil pump sleeve	1
40	Screw	1	81-4	Oil input tube 2	1
41	Pick block	1	81-5	Oil input tube	1
42	Screw	2	82	Oil pump core assembly	1
43	Brake block	1	82-1	Oil pump core	1
44	Left housing	1	82-2	Oil pump gear	1
45	Brand label	1	82-3	Oil pump pin	1

Pos	Parts	QTY
82-4	O type ring	1
83	Protect gear	1
84	Rubber ring	1
85	Dust proof cap	1
86	Chain gear	1
87	Gasket 2	1
88	Circlip	1
89	Screw	3
90	Screw	17
91	Front handle side support	1
92	Brand label 3	1
93	Warning label	1