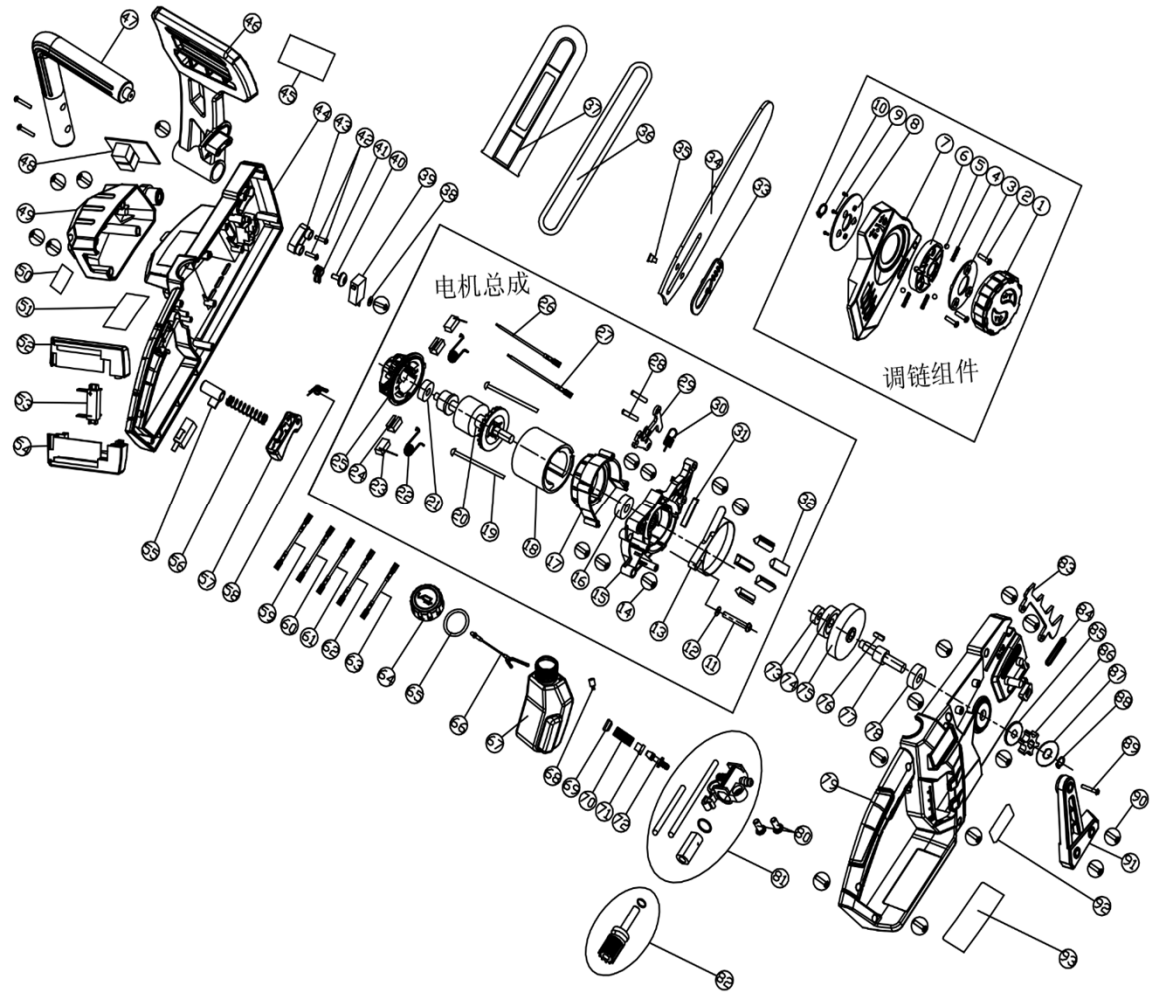


Jula item 013185

PLYL-85 Exploded View



Jula item 013185			PLYL-85		
Pos	Parts	QTY	Pos	Parts	QTY
1	Knob	1	52	Battery seat upper	1
2	Screw	3	53	Pole seat	1
3	Knob press plate	1	54	Battery seat lower	1
4	Spring	3	55	Switch side button	1
5	Steel ball	3	56	Spring	1
6	Knob1	1	57	Switch trigger	1
7	Bar press plate	1	58	Spring	1
8	Rotate plate	1	59	Inner wire 3	1
9	Screw	3	60	Inner wire 4	1
10	Circlip	1	61	Inner wire 5	1
11	Screw	1	62	Inner wire 6	1
12	Gasket 3	1	63	Inner wire 7	1
13	Brake belt	1	64	Oil tank cap	1
14	Screw	7	65	O type ring	1
15	Motor fixture	1	66	Oil tank cap hold line	1
16	Bearing	1	67	Oil tank	1
17	Windproof plate	1	68	Oil tank rubber nozzle	1
18	Stator	1	69	Strainer plug	1
19	Stator rod	2	70	Spring	1
20	Rotor	1	71	Seal ring	1
21	Bearing	1	72	Oil tank nozzle	1
22	Torsion spring	2	73	Bearing	1
23	Brush	2	74	Big gear	1
24	Brush sleeve	2	75	Brake wheel	1
25	Brush holder	1	76	Flat key	1
26	Brush line 1	1	77	Output spindle	1
27	Brush line 2	1	78	Bearing	1
28	Pillar pin	2	79	Right housing	1
29	Hinge	1	80	Screw	2
30	Spring	1	81	Oil pump housing assembly	1
31	Wool felt	1	81-1	Oil pump housing	1
32	BAKELITE column	5	81-2	Rubber gasket	1
33	Adjusting plate	1	81-3	Oil pump sleeve	1
34	Bar	1	81-4	Oil input tube 2	1
35	Rivert	1	81-5	Oil input tube	1
36	Chain	1	82	Oil pump core assembly	1
37	Bar sleeve	1	82-1	Oil pump core	1
38	Gasket	1	82-2	Oil pump gear	1
39	Micro switch	2	82-3	Oil pump pin	1
40	Screw	1	82-4	O type ring	1
41	Pick block	1	83	Protect gear	1
42	Screw	2	84	Rubber ring	1
43	Brake block	1	85	Dust proof cap	1
44	Left housing	1	86	Chain gear	1
45	Brand label	1	87	Gasket 2	1
46	Protect plate	1	88	Circlip	1
47	Front handle	1	89	Screw	3
48	PCB	1	90	Screw	17
49	Back cover	1	91	Front handle side support	1
50	Brand label 2	1	92	Brand label 3	1
51	Spec label	1	93	Warning label	1