



Bruksanvisning för släpkärra 230 kg
Bruksanvisning for tilhenger 230 kg
Instrukcja obsługi przyczepy lekkiej 230 kg
Assembly Instructions for Trailer 230 kg

707-016

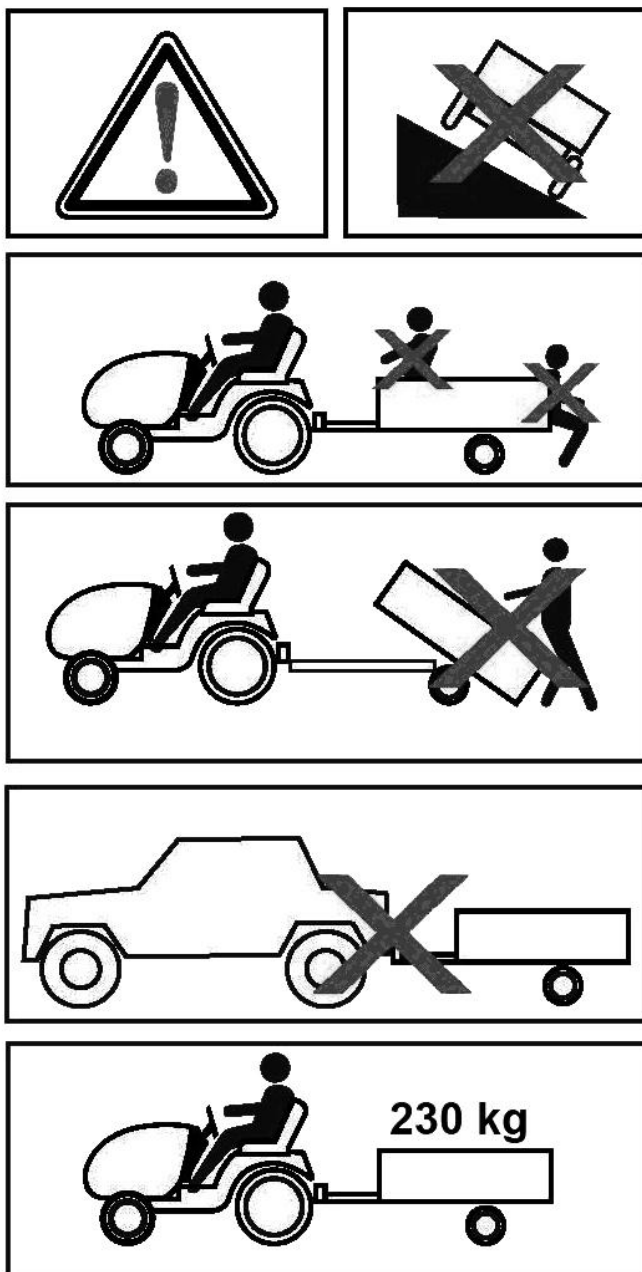


SV Bruksanvisning i original
NO Bruksanvisning i original
PL Instrukcja obsługi w oryginale
EN Operating instructions in original

SVENSKA	3
SÄKERHETSANVISNINGAR	3
TEKNISKA DATA	3
BESKRIVNING	4
MONTERING	5
SPRÄNGSKISS	14
NORSK	15
SIKKERHETSANVISNINGER	15
TEKNISKE DATA	15
BESKRIVELSE	16
MONTERING	17
SPRENGSKISSE	24
POLSKI	25
ZASADY BEZPIECZEŃSTWA	25
DANE TECHNICZNE	25
OPIS	26
MONTAŻ	27
SCHEMAT	35
ENGLISH	36
SAFETY INSTRUCTIONS	36
TECHNICAL DATA	36
DESCRIPTION	37
ASSEMBLY	38
EXPLODED VIEW	45

SÄKERHETSANVISNINGAR

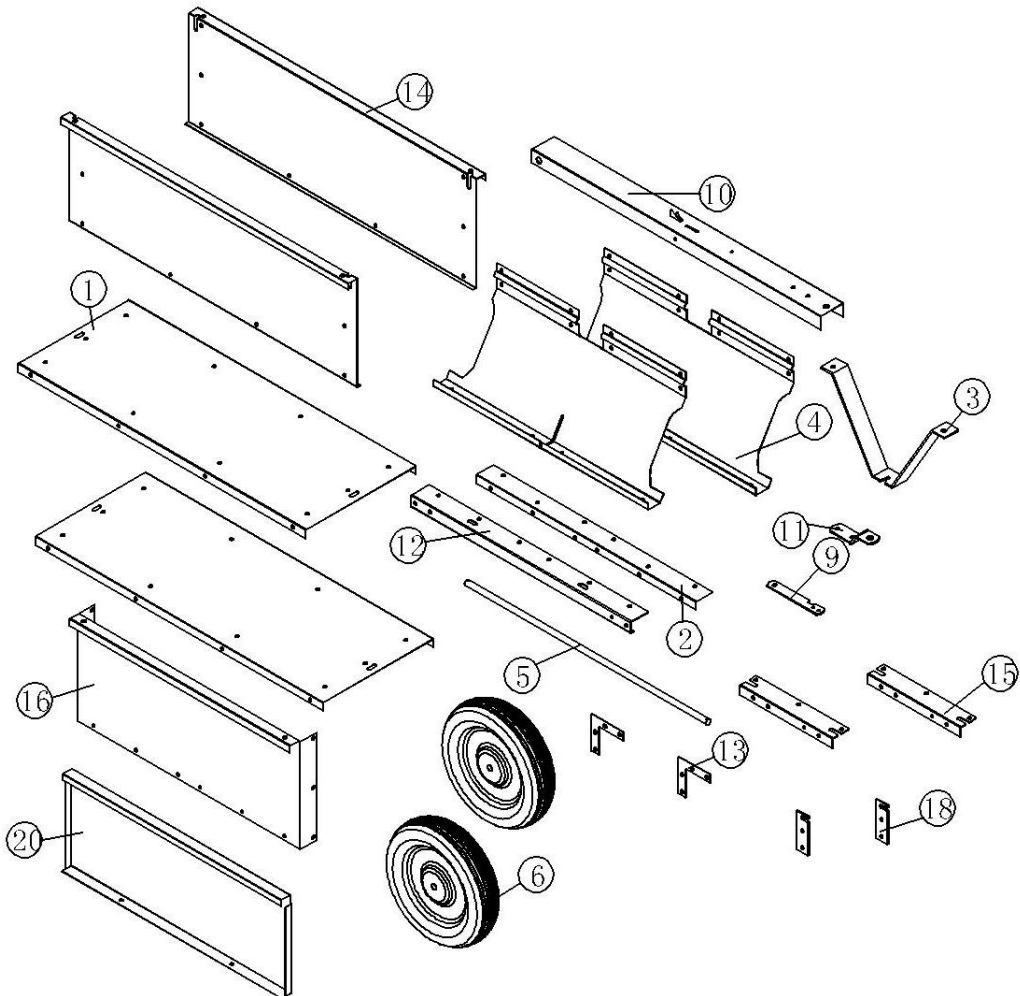
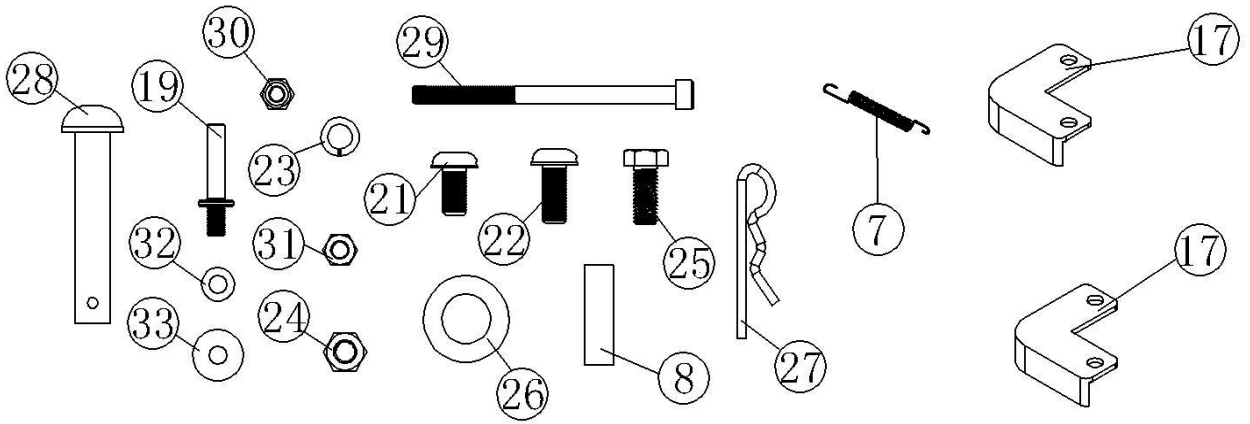
Läs bruksanvisningen noggrant innan användning!



TEKNISKA DATA

Kapacitet	230 kg
Vikt	38 kg
Mått	1000 x 800 x 700 mm
Rek.däcktryck	1,4-1,8 bar
Max.däcktryck	1,8 bar

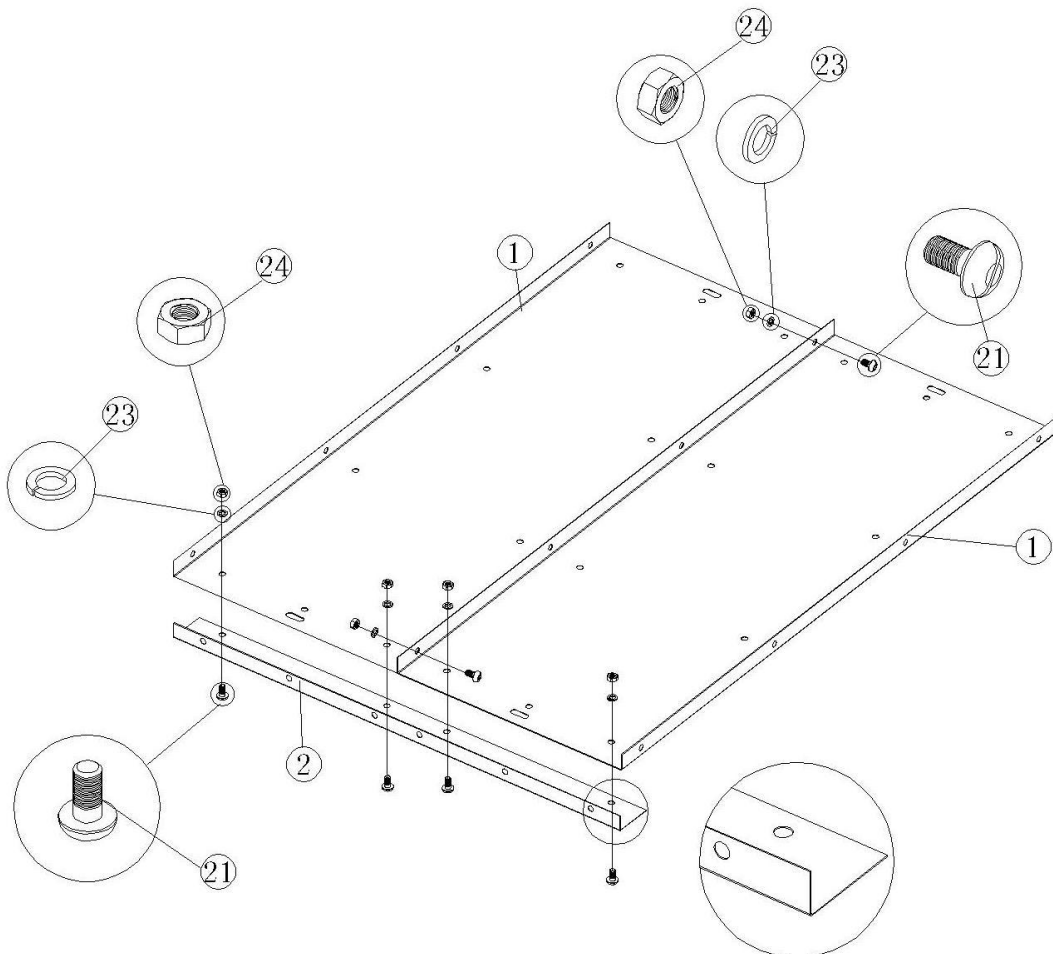
BESKRIVNING



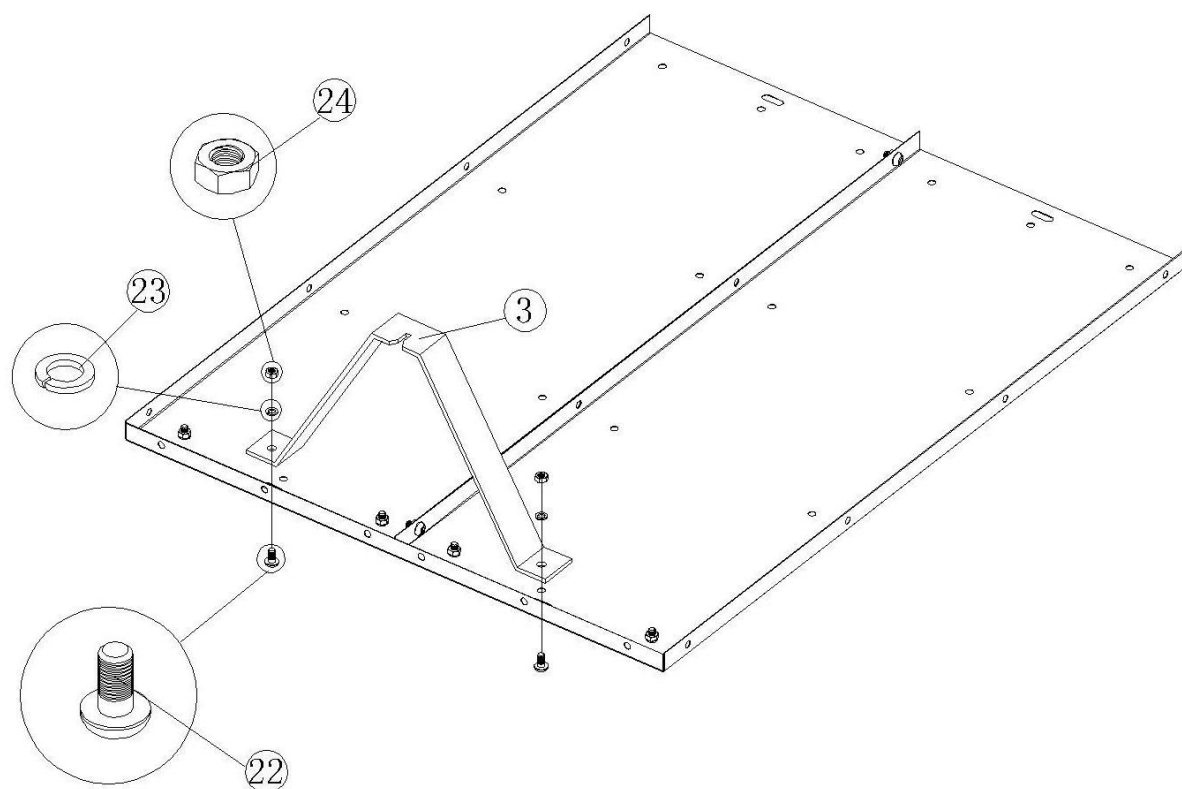
Pos.	Benämning	Antal	Pos.	Benämning	Antal
1	Botten	2	18	Spärr, bakre läm	2
2	Främre tvärstag	1	19	Sprint, bakre läm	2
3	Stöd för dragstång	1	20	Bakre läm	1
4	Hållare för hjulaxel	2	21	Skruv M8 x 16	60
5	Hjulaxel	1	22	Skruv M8 x 20	2
6	Hjul	2	23	Låsbricka Ø 8	72
7	Fjäder	1	24	Sexkantmutter M8	72
8	Distans	2	25	Sexkantskruv M8 x 20	10
9	Spärr	1	26	Planbricka Ø16	4
10	Dragstång	1	27	Sprint	3
11	Hållare för dragstångssprint	1	28	Dragstångssprint	1
12	Bakre tvärstag	1	29	Sexkantskruv M6 x 90	1
13	Bakre vinkelstöd	2	30	Nylonlåsmutter M6	1
14	Sidopanel	2	31	Sexkantmutter M6	2
15	Bakre hörnplåt	2	32	Planbricka Ø 6	2
16	Frontpanel	1	33	Stor bricka Ø 6	1
17	Främre hörnplåt	2			

MONTERING

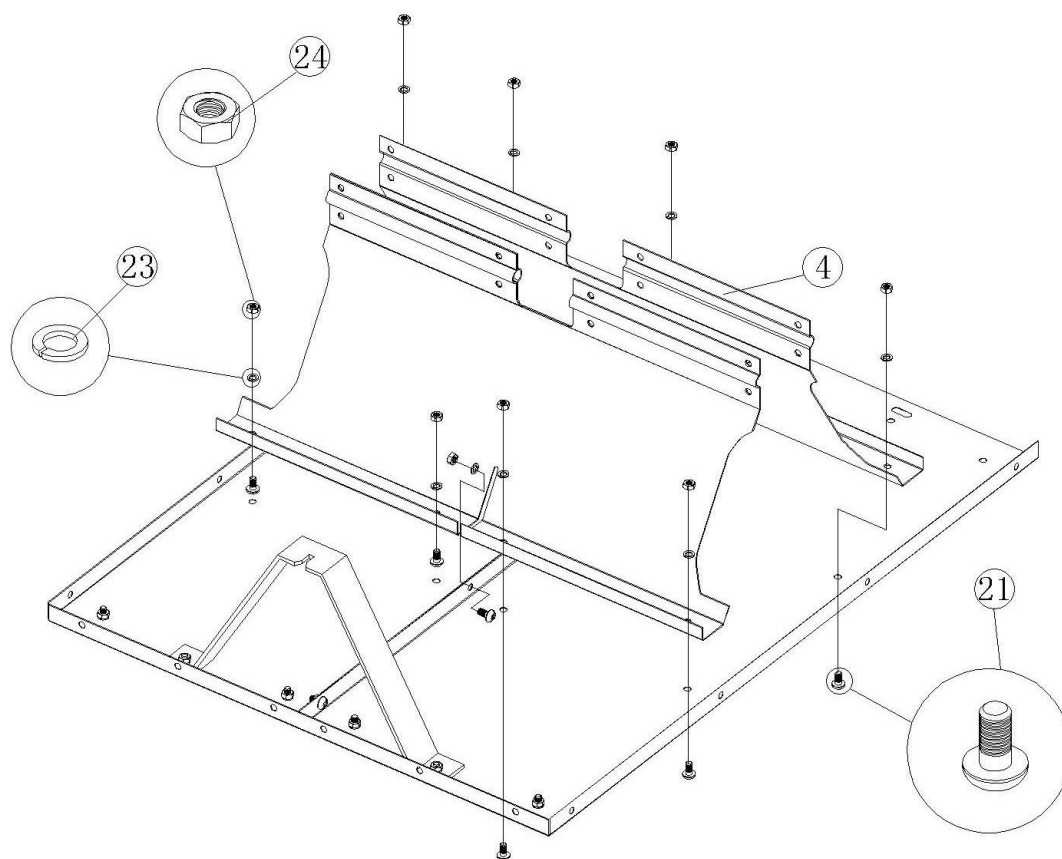
Steg 1: Montera botten och främre tvärstag



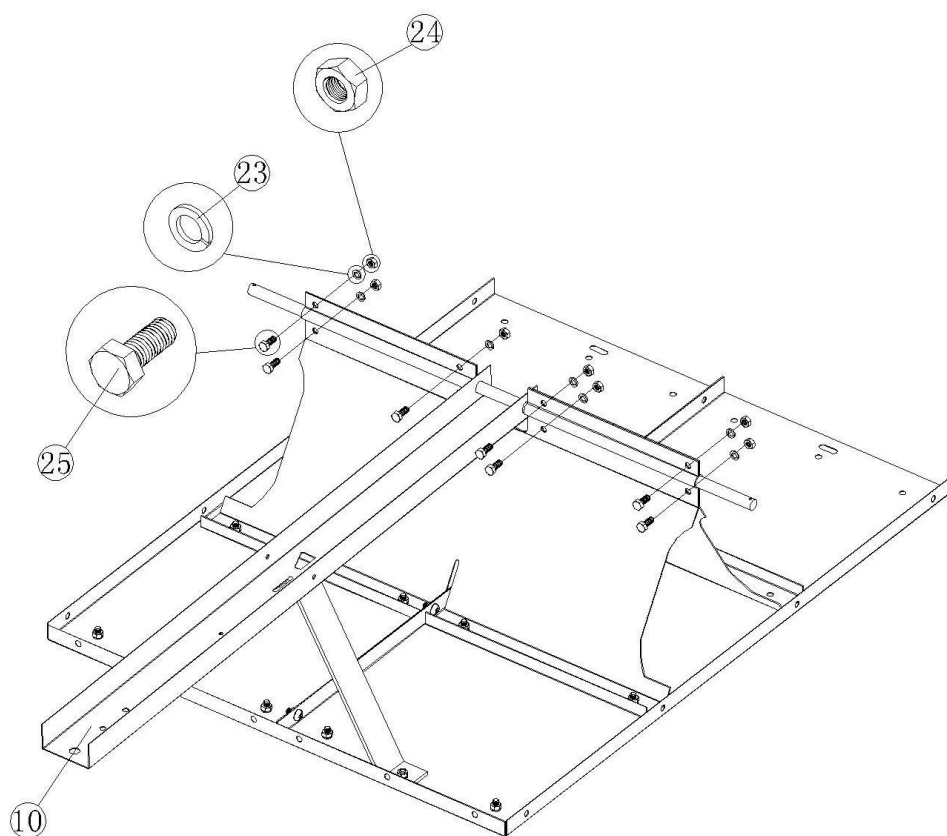
Steg 2: Montera stöd för dragstång



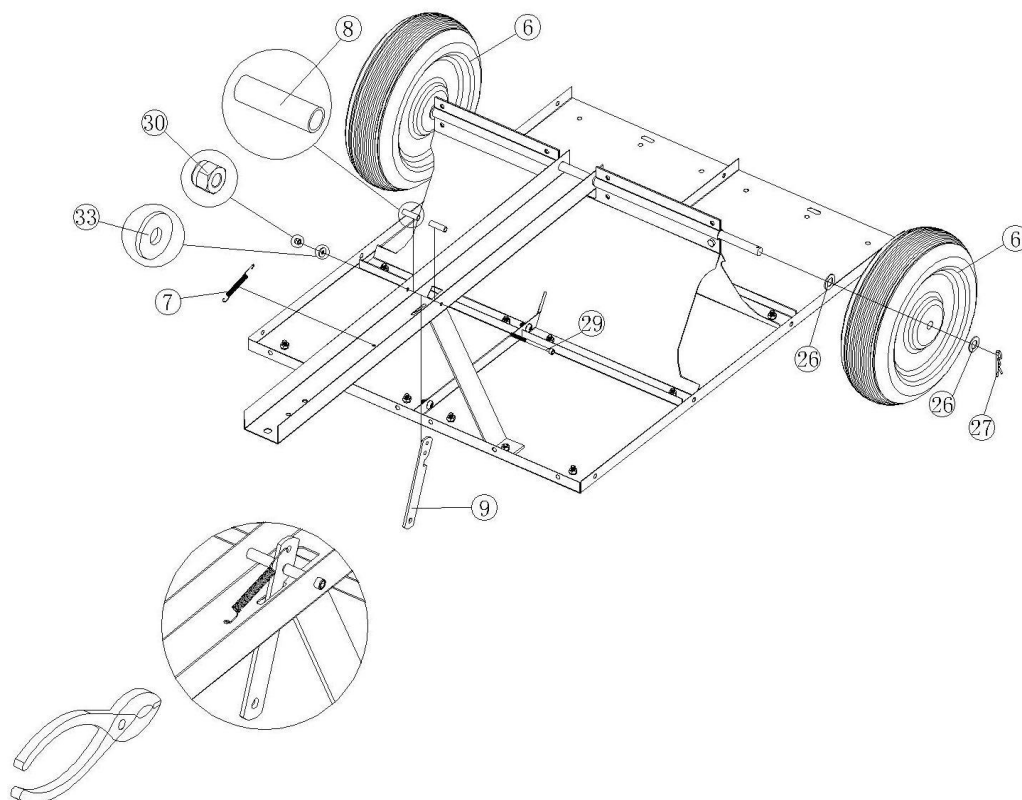
Steg 3: Montera hållare för hjulaxel



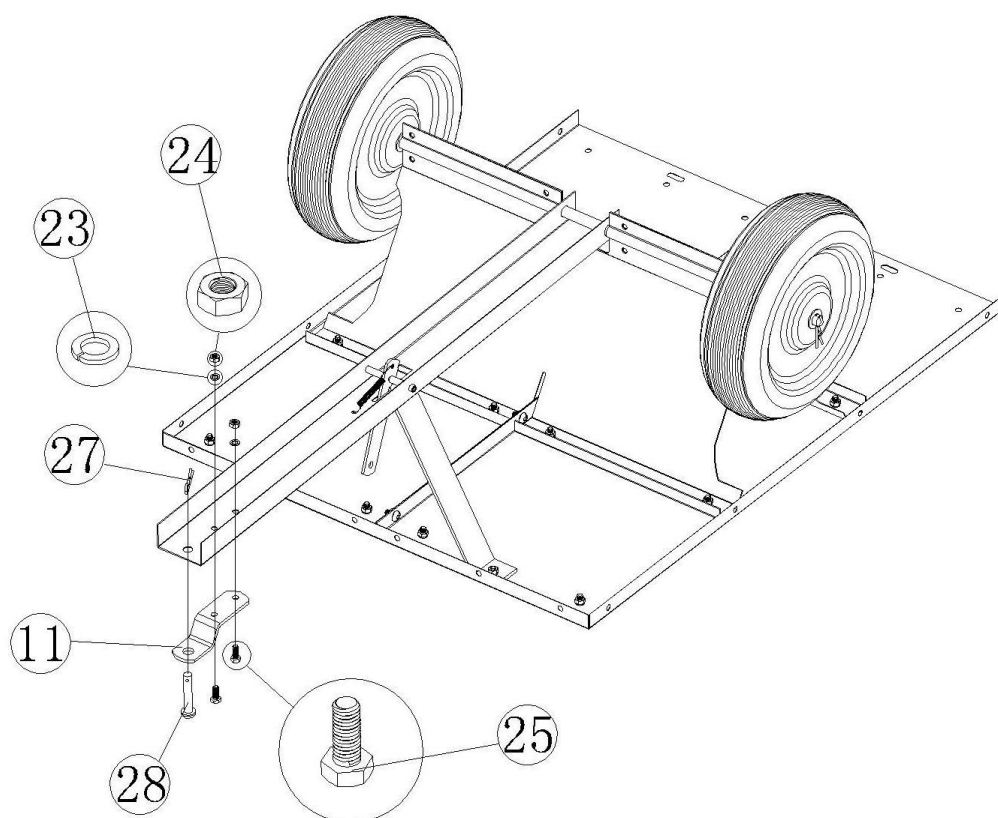
Steg 4: Montera dragstång och hjulaxel



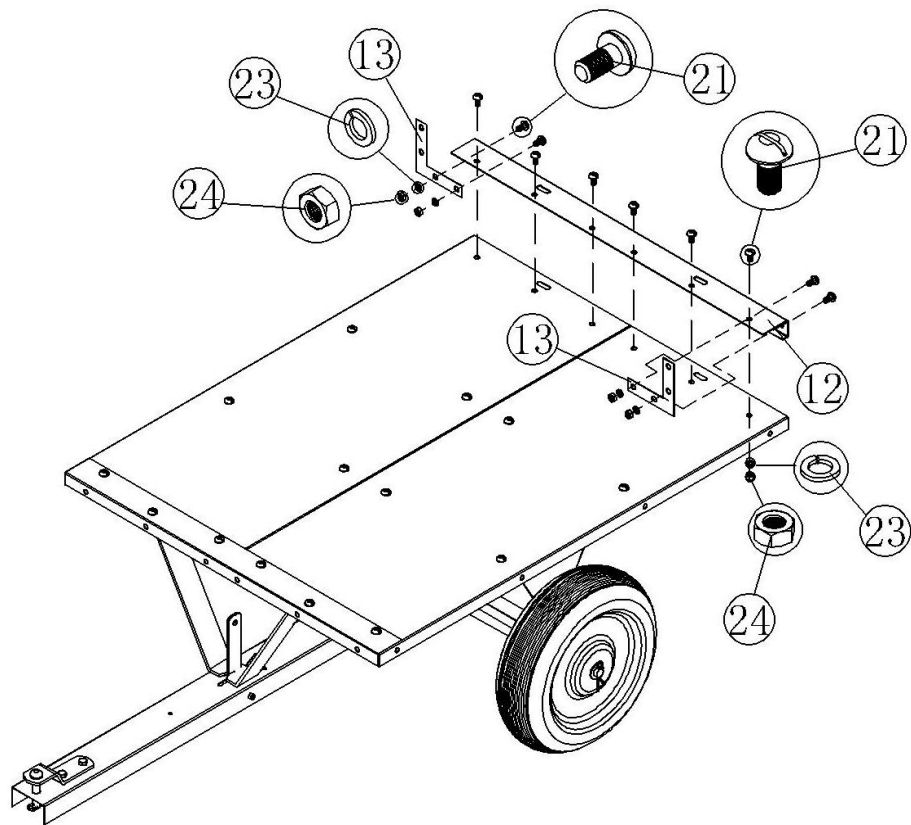
Steg 5: Montera hjul och tippspärr



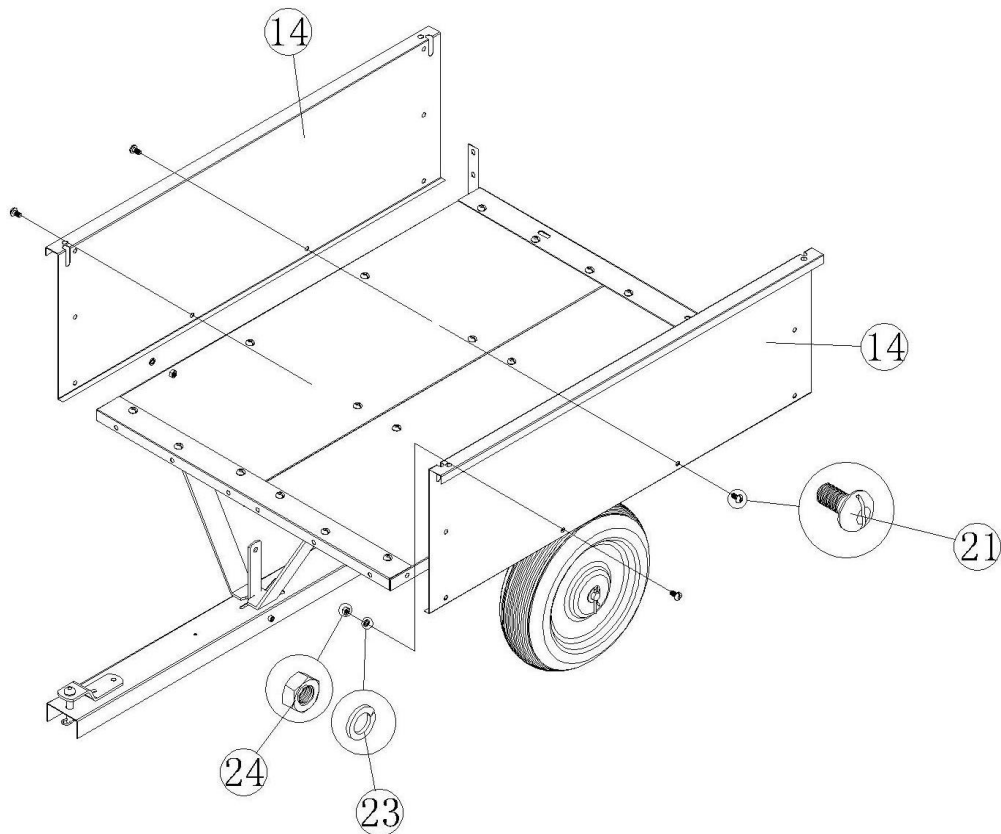
Steg 6: Montera koppling



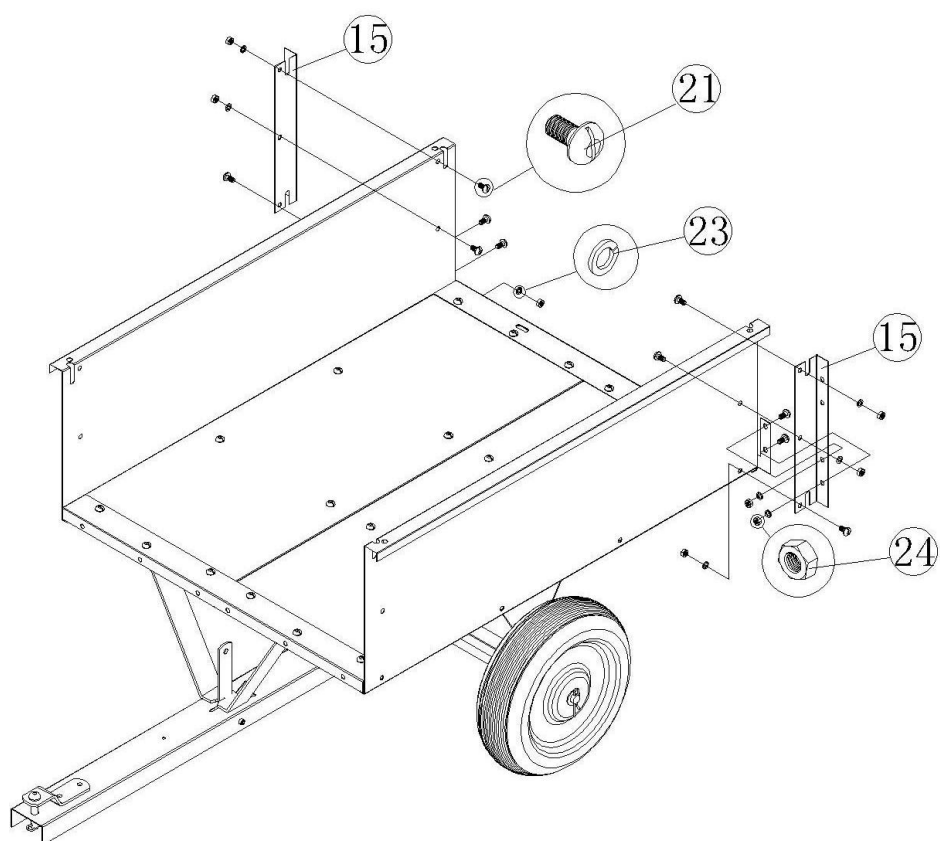
Steg 7: Montera bakre tvärstag och vinkelstöd



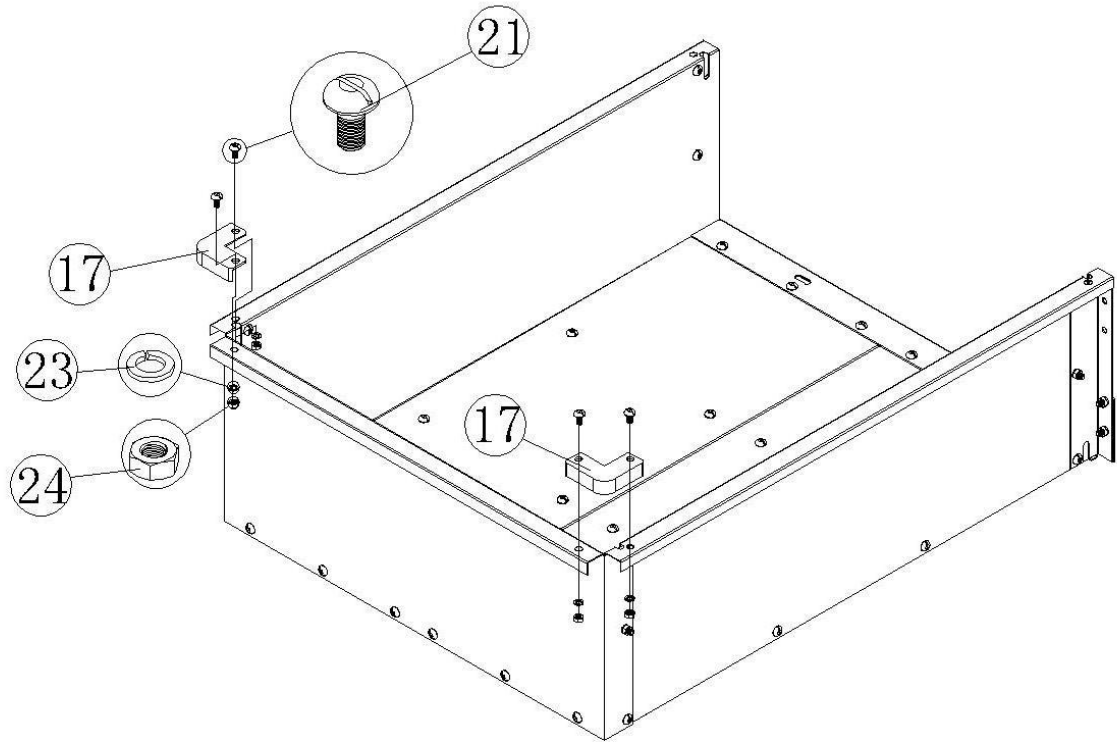
Steg 8: Montera sidopaneler



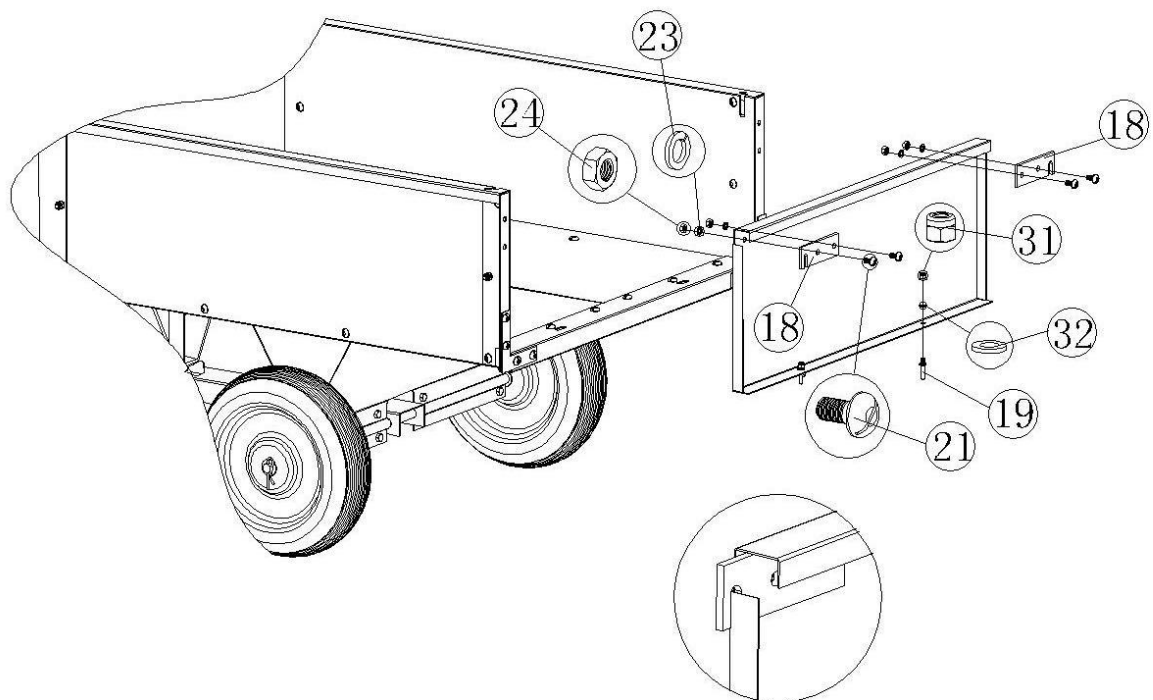
Steg 9: Montera bakre hörnplåt



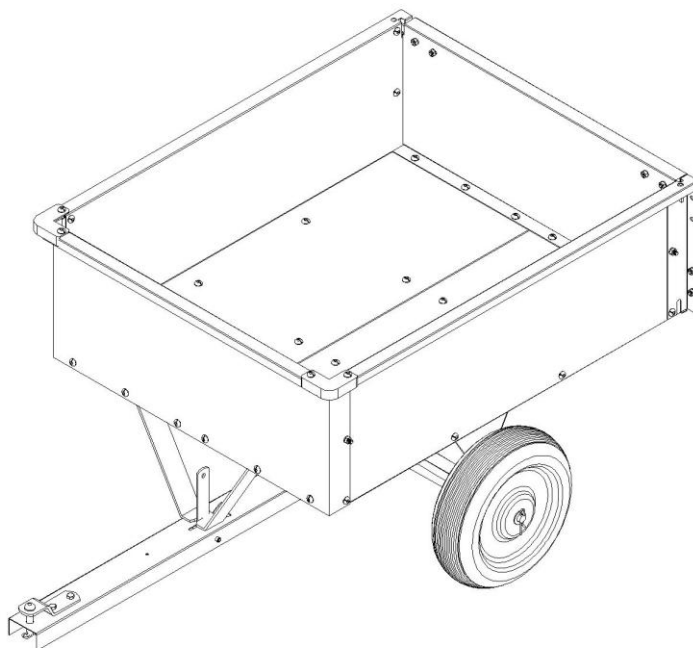
Steg 10: Montera frontpanel och främre hörnplåt



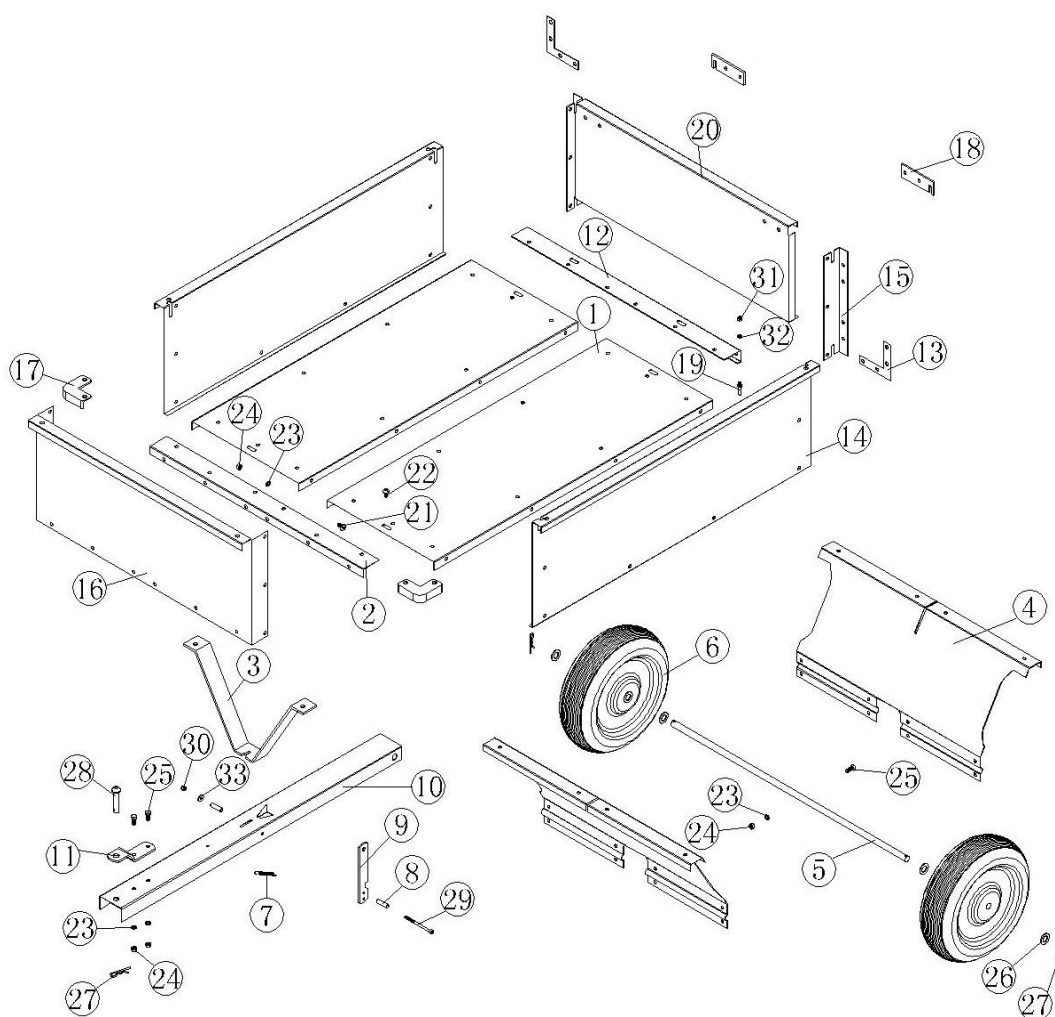
Steg 11: Montera bakre läm



Kärran är nu färdigmonterad och redo att användas.



SPRÄNGSKISS



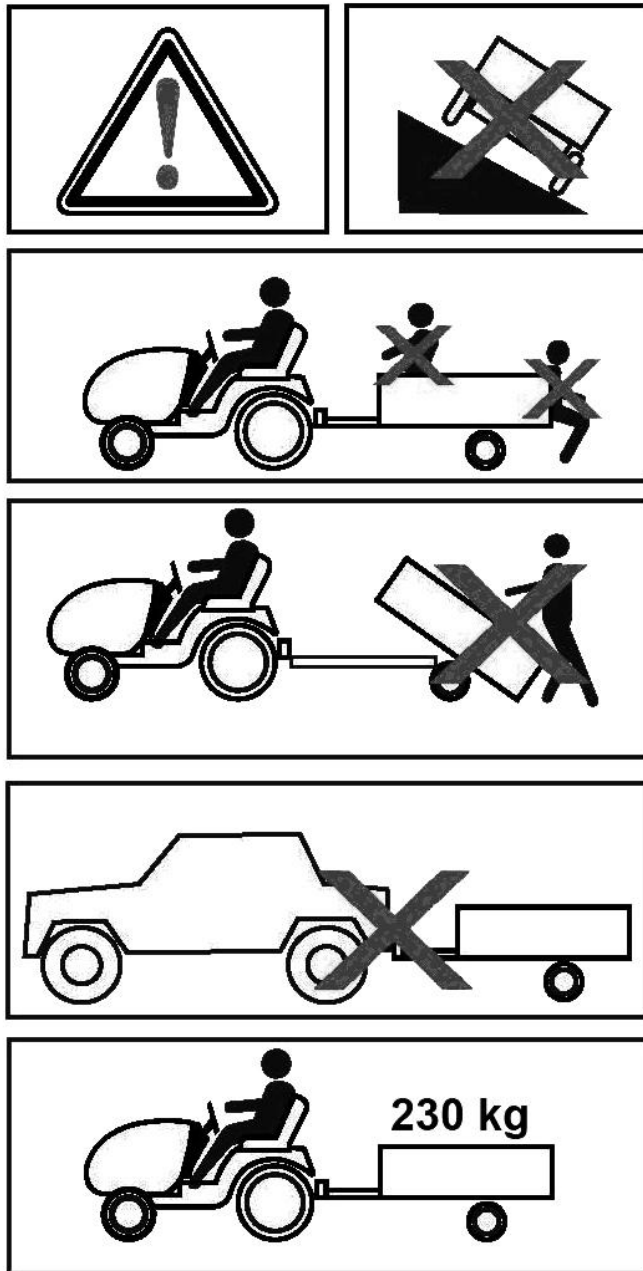
Med reservation för tryckfel och konstruktionsändringar som vi inte kan råda över. Vid eventuella problem, kontakta vår serviceavdelning på telefon: 0200-88 55 88.

Jula AB, Box 363, 532 24 SKARA

www.jula.se

SIKKERHETSANVISNINGER

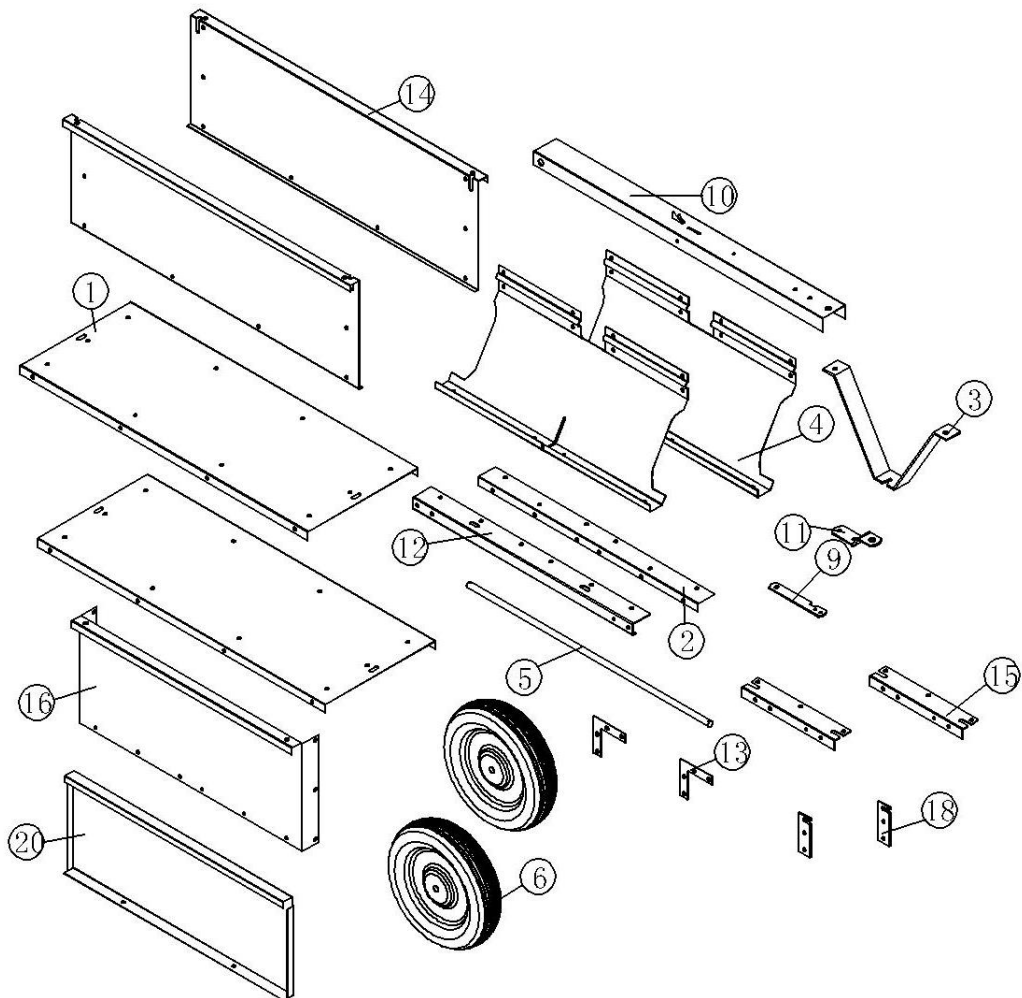
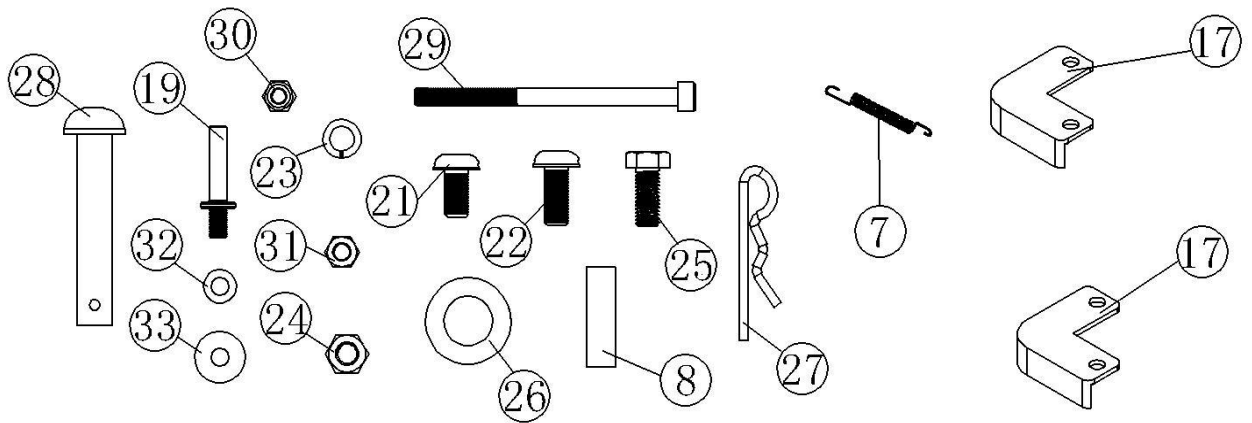
Les bruksanvisningen nøye før bruk!



TEKNISKE DATA

Kapasitet	230 kg
Vekt	38 kg
Mål	1000 x 800 x 700 mm
Anbefalt dekktrykk	1,4-1,8 bar
Maks.dekktrykk	1,8 bar

BESKRIVELSE



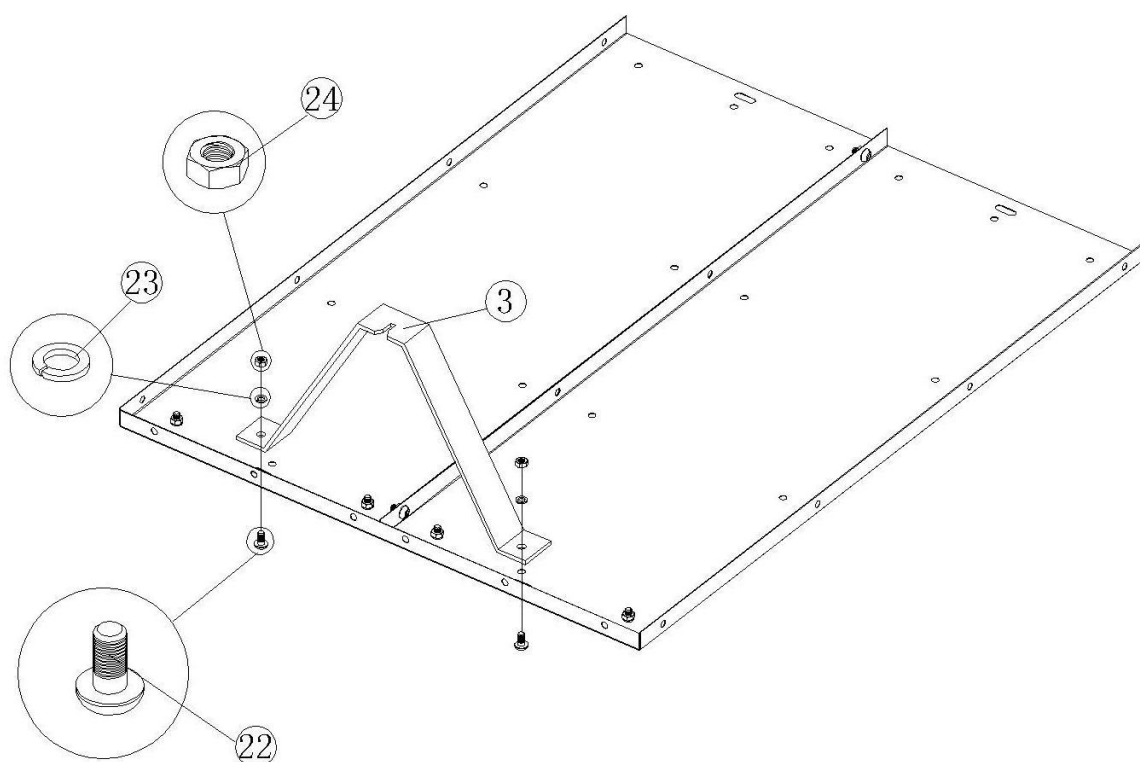
Ref#	Beskrivelse	Antall	Ref#	Beskrivelse	Antall
1	Bunnplate	2	18	Låsbeslag for baklem	2
2	Fremre tverrstag	1	19	Låsepinne for baklem	2
3	Støtte for trekkstang	1	20	Baklem	1
4	Holder for hjulaksel	2	21	Skrue M8x16	60
5	Hjulaksel	1	22	Skrue M8x20	2
6	Hjul	2	23	Låseskive Ø8	72
7	Sperrefjær	1	24	Sekskantmutter M8	72
8	Avstandsstykke	2	25	Sekskantbolt M8x20	10
9	Tippesperre	1	26	Flat skive Ø16	4
10	Trekkstang	1	27	R Låsepinne	3
11	Kopling	1	28	Låsepinne for kopling	1
12	Bakre tverrstag	1	29	Sekskantbolt M6x90	1
13	Bakre vinkelstøtte	2	30	Låsemutter i nylon M6	1
14	Sidepanel	2	31	Sekskantmutter M6	2
15	Beslag til bakre hjørne	2	32	Flat skive Ø6	2
16	Frontpanel	1	33	Stor skive Ø6	1
17	Beslag til fremre hjørne	2			

MONTERING

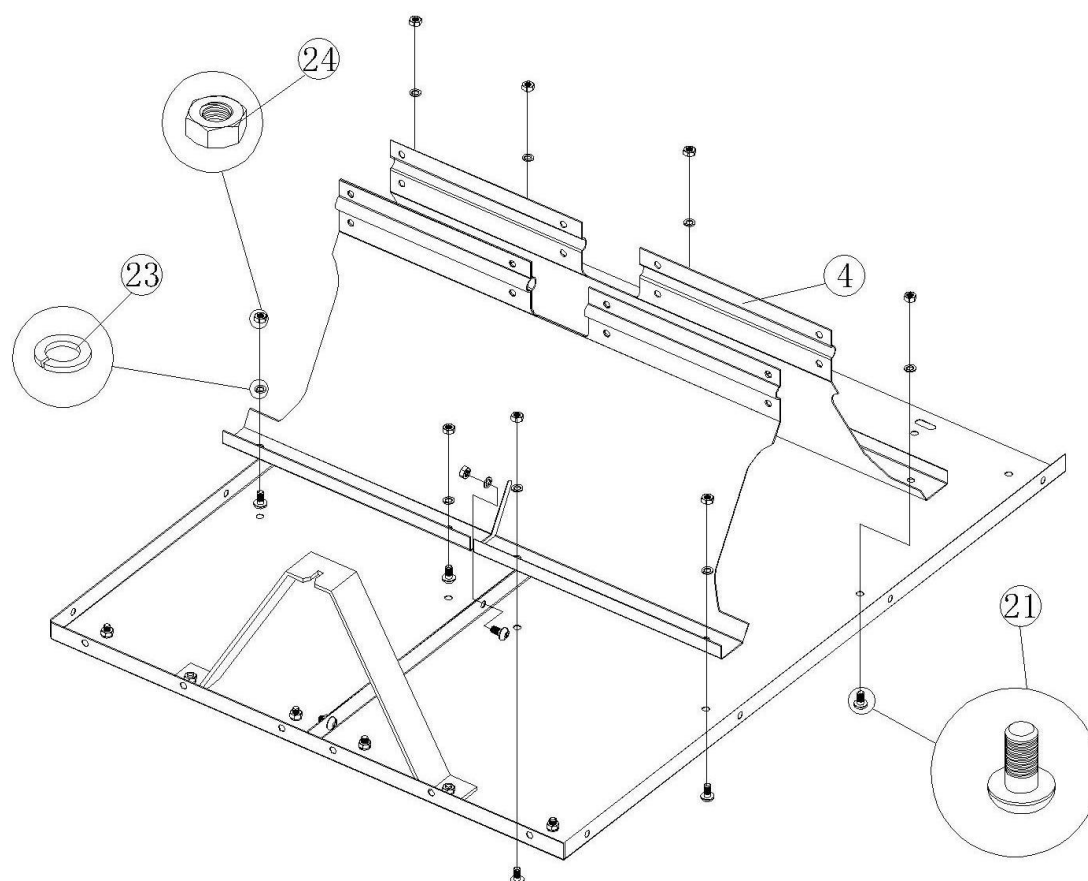
Trinn 1: Monter bunnen og fremre tverrstag



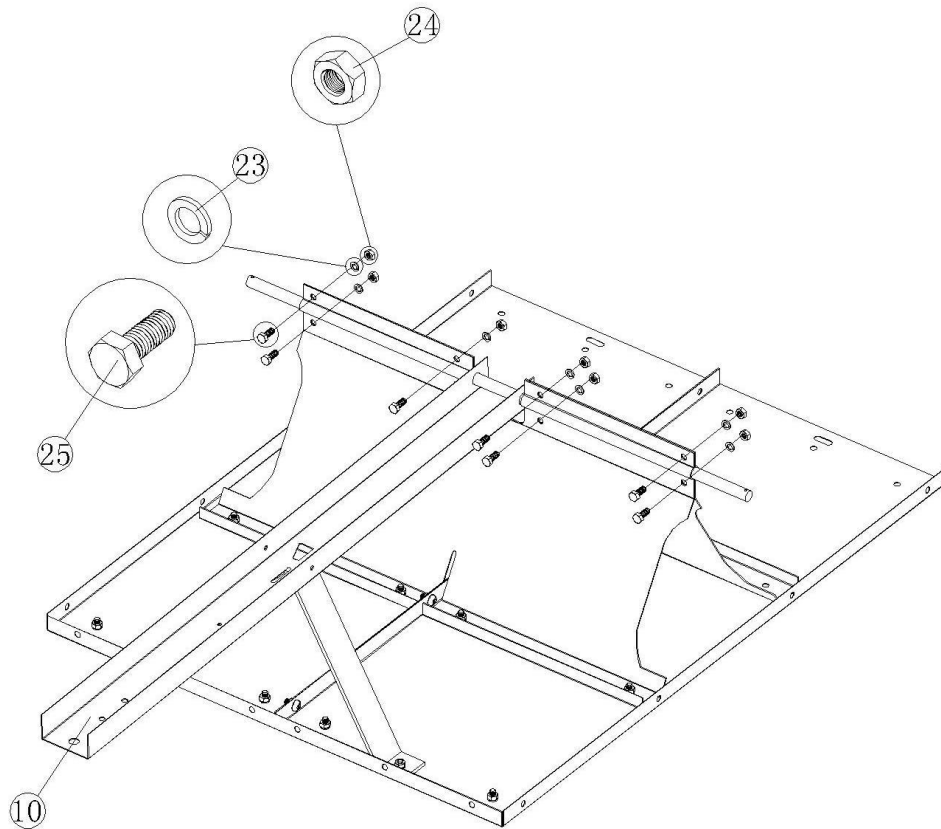
Trinn 2: Monter støtte for trekkstang



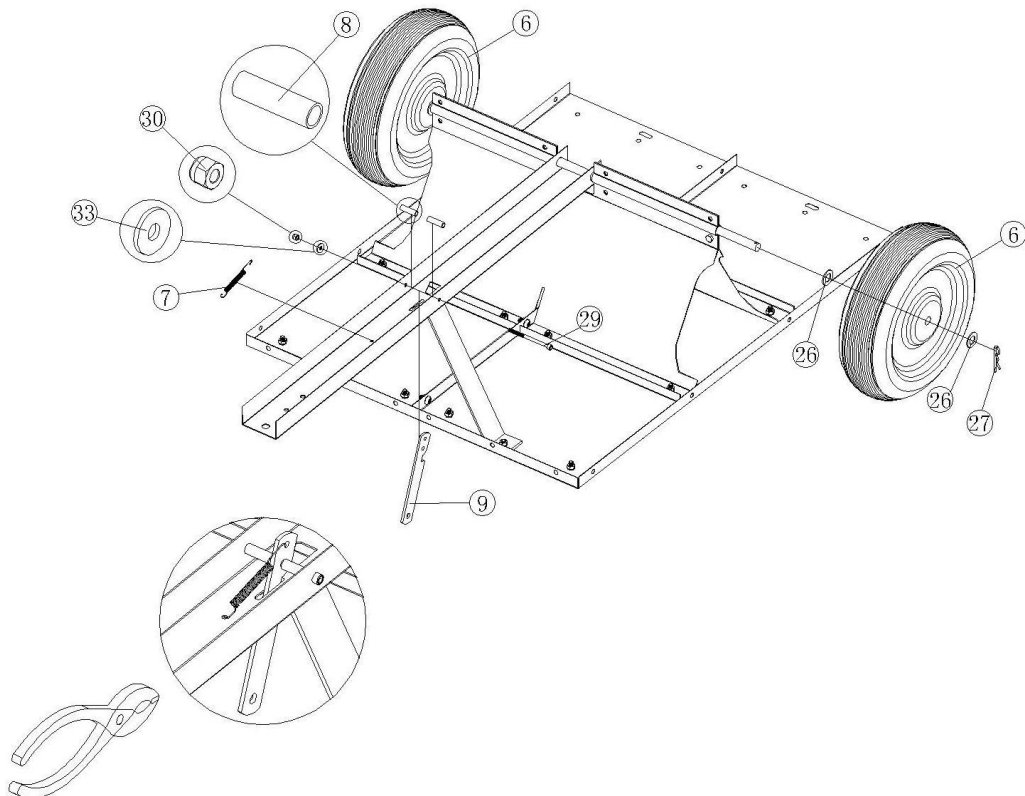
Trinn 3: Monter holder for hjulaksel



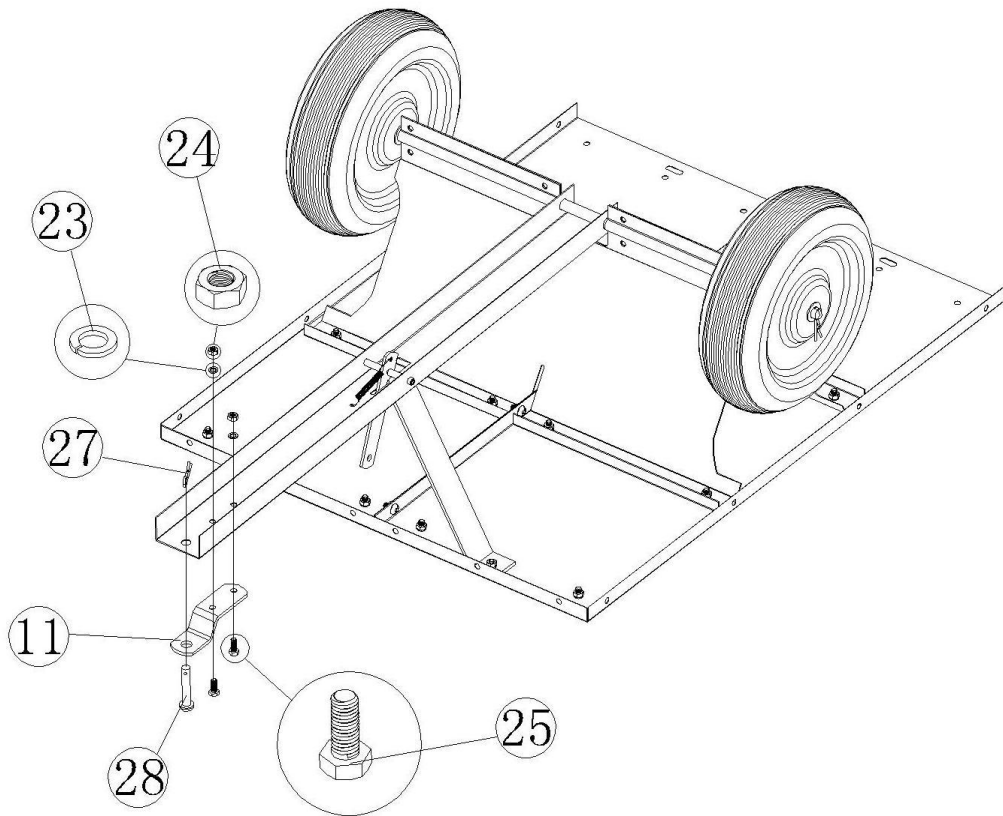
Trinn 4: Monter trekkstang og hjulaksel



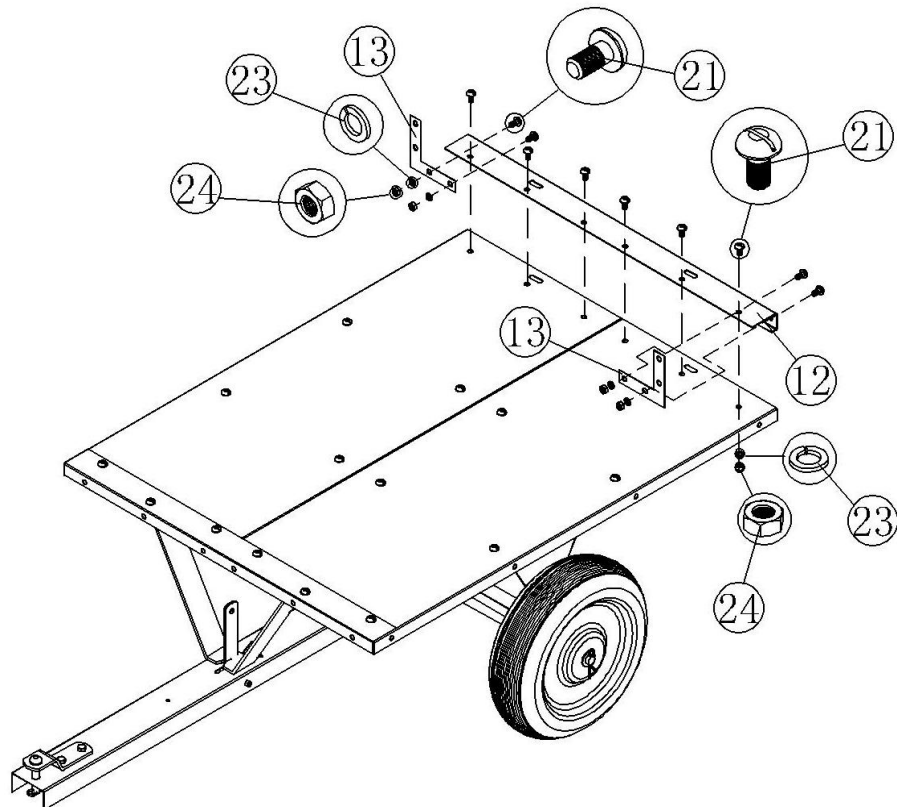
Trinn 5: Monter hjul og tipsperre



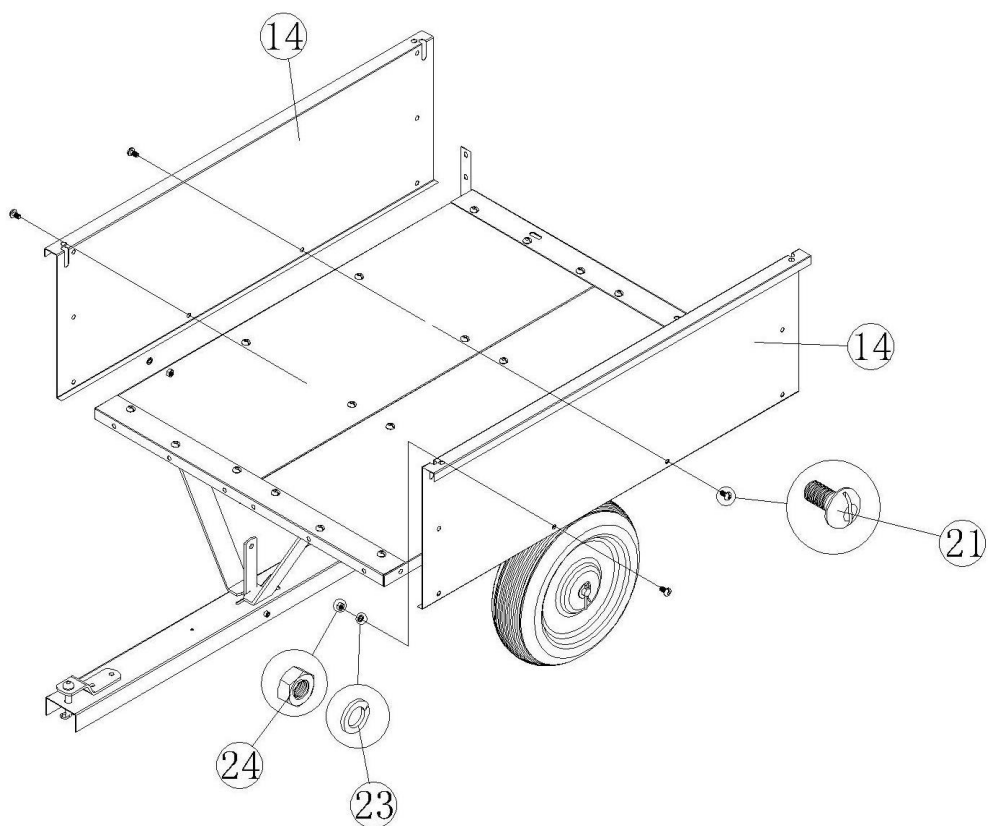
Trinn 6: Monter kopling



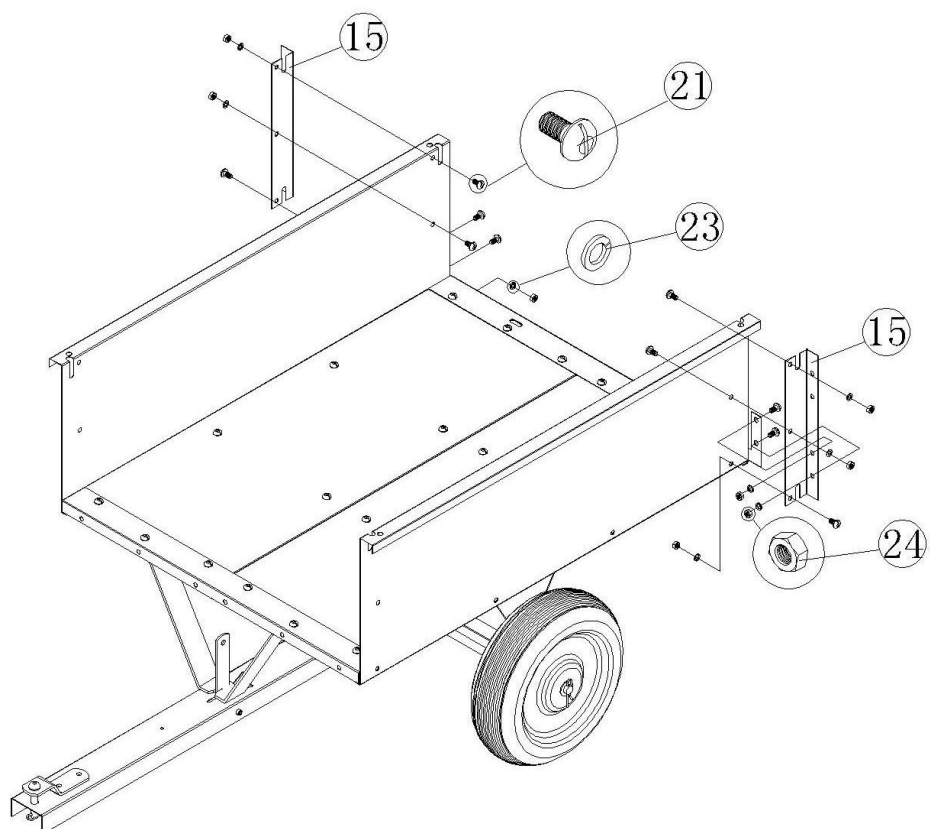
Trinn 7: Monter bakre tverrstag og vinkelstøtte



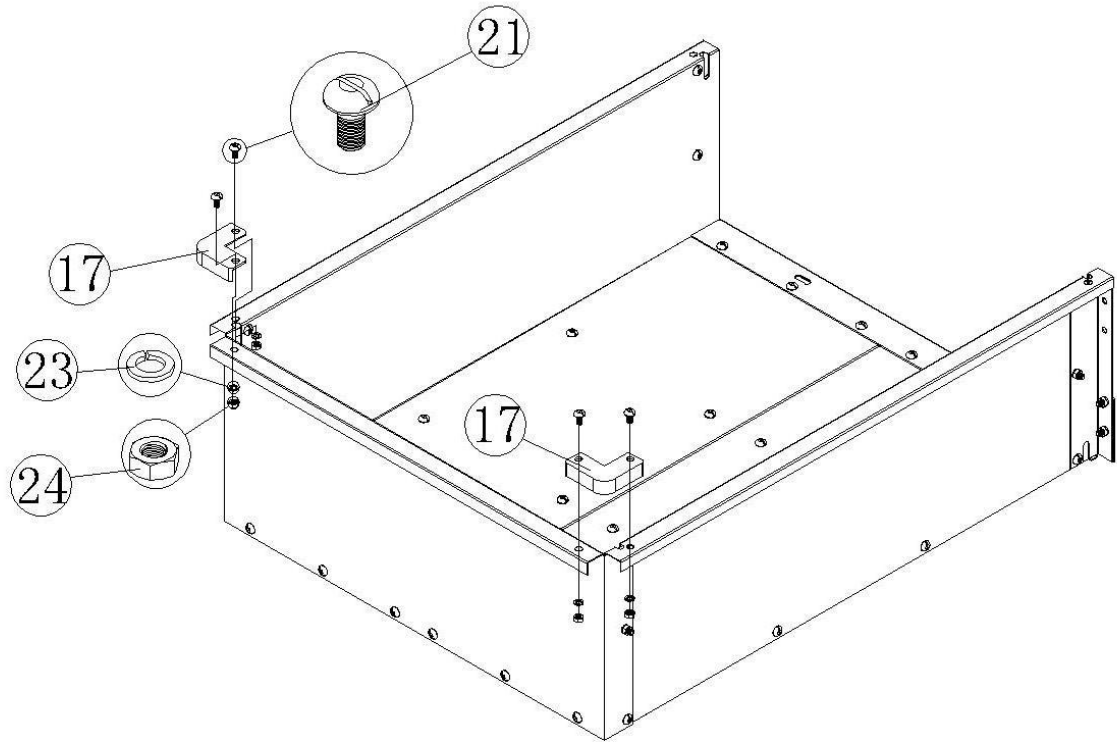
Trinn 8: Monter sidepaneler



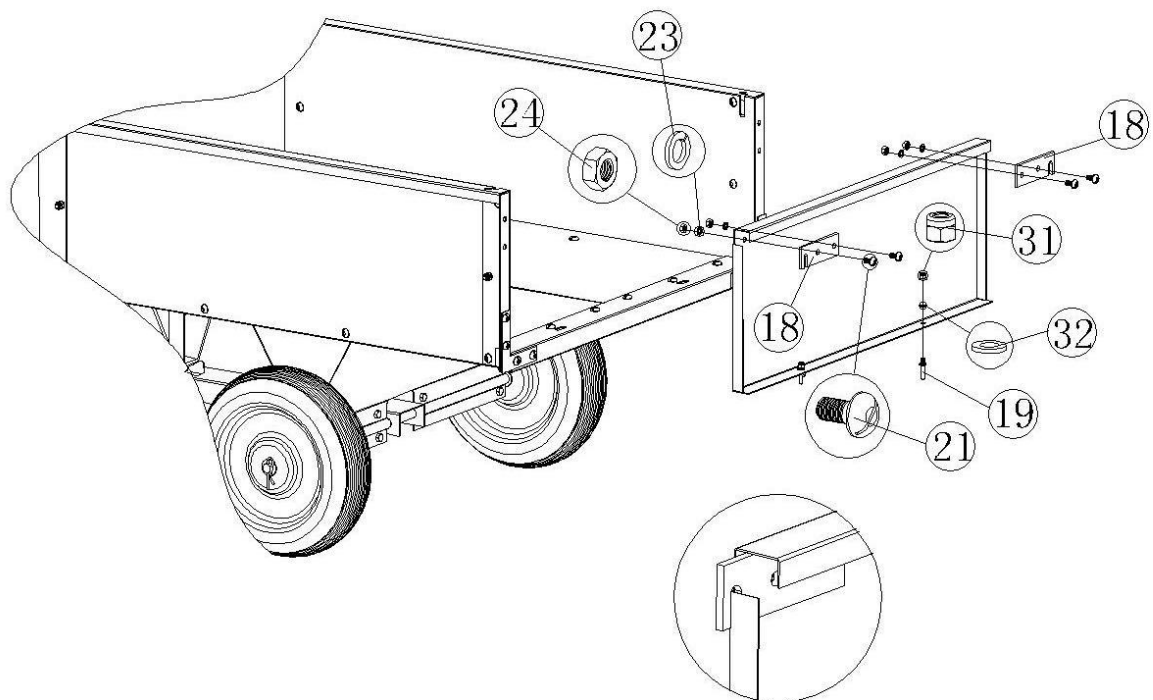
Trinn 9: Monter bakre hjørneplate



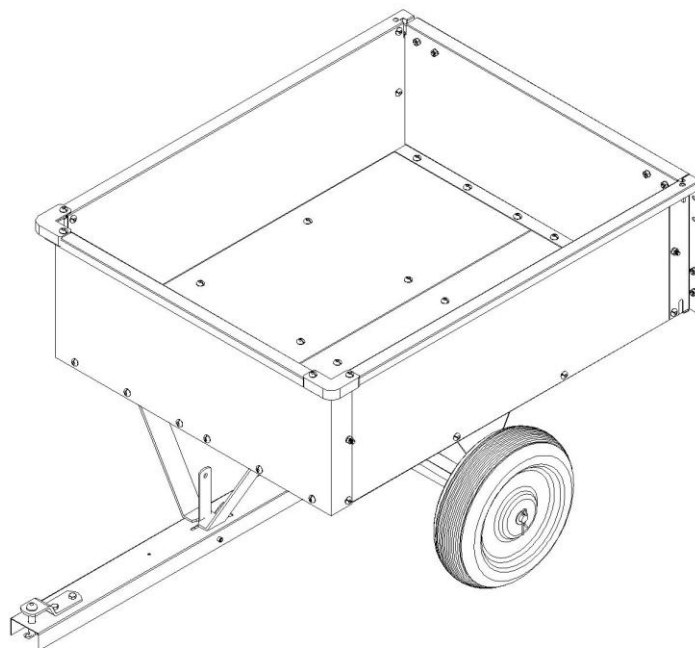
Trinn 10: Monter frontpanel og fremre hjørneplate



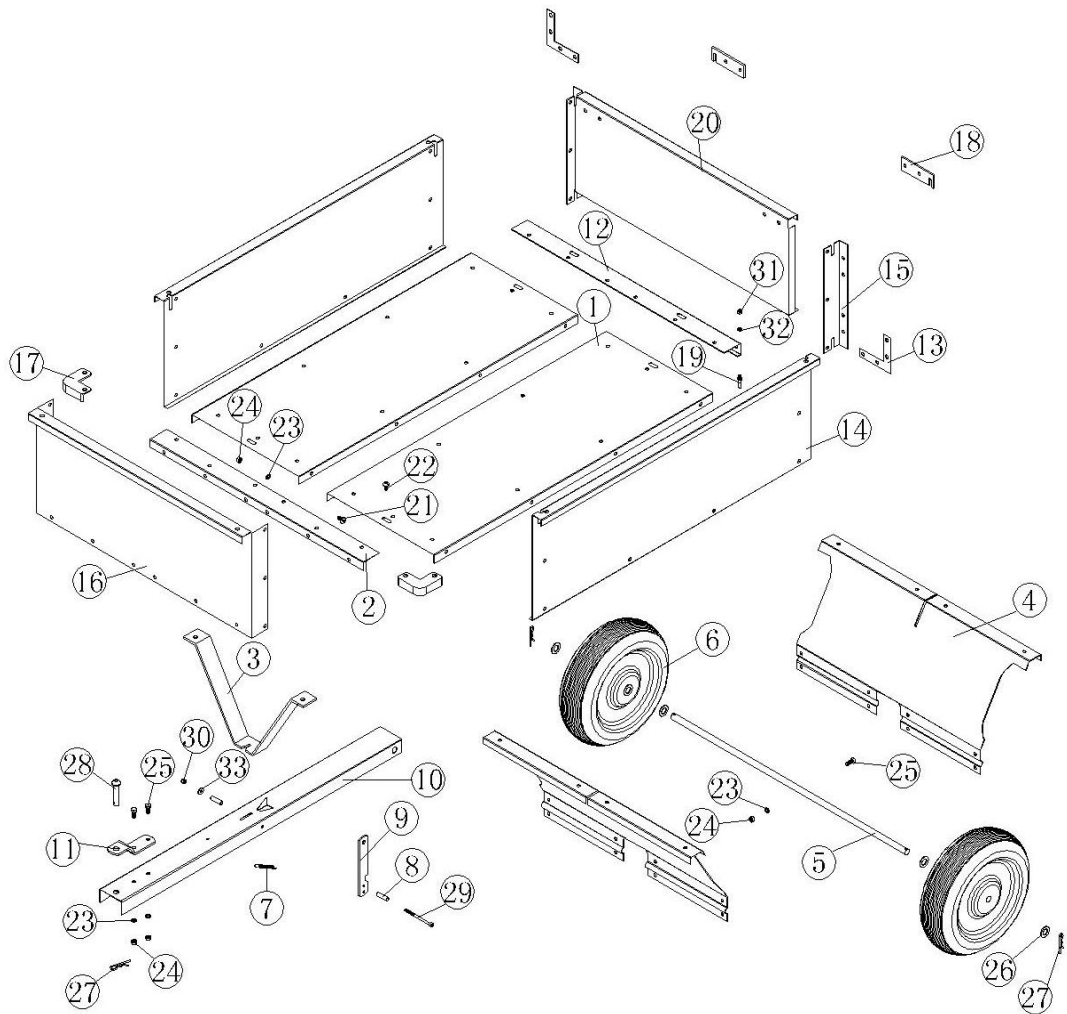
Trinn 11: Monter baklem



Tilhengeren er nå ferdig montert og klar for bruk.



SPRENGSKISSE



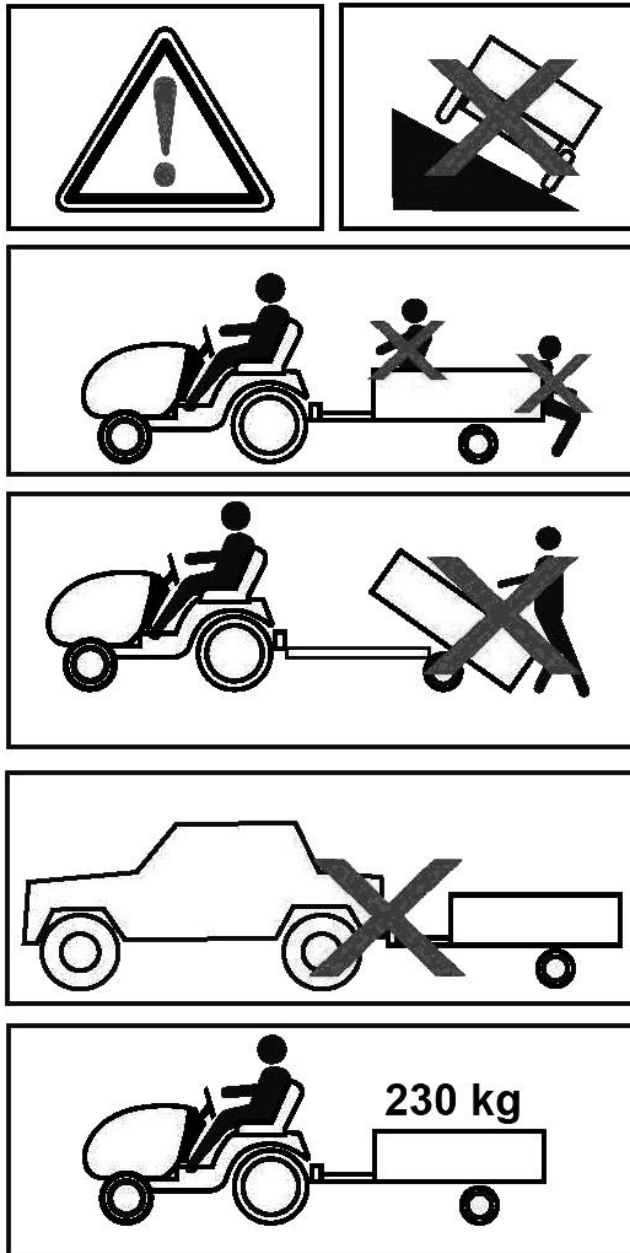
Med forbehold om trykkfeil og konstruksjonsendringer utenfor vår kontroll. Ved eventuelle problemer, kontakt vår serviceavdeling på telefon 67 90 01 34.

Jula Norge AS, Solheimsveien 6–8, 1471 LØRENSKOG

www.jula.no

ZASADY BEZPIECZEŃSTWA

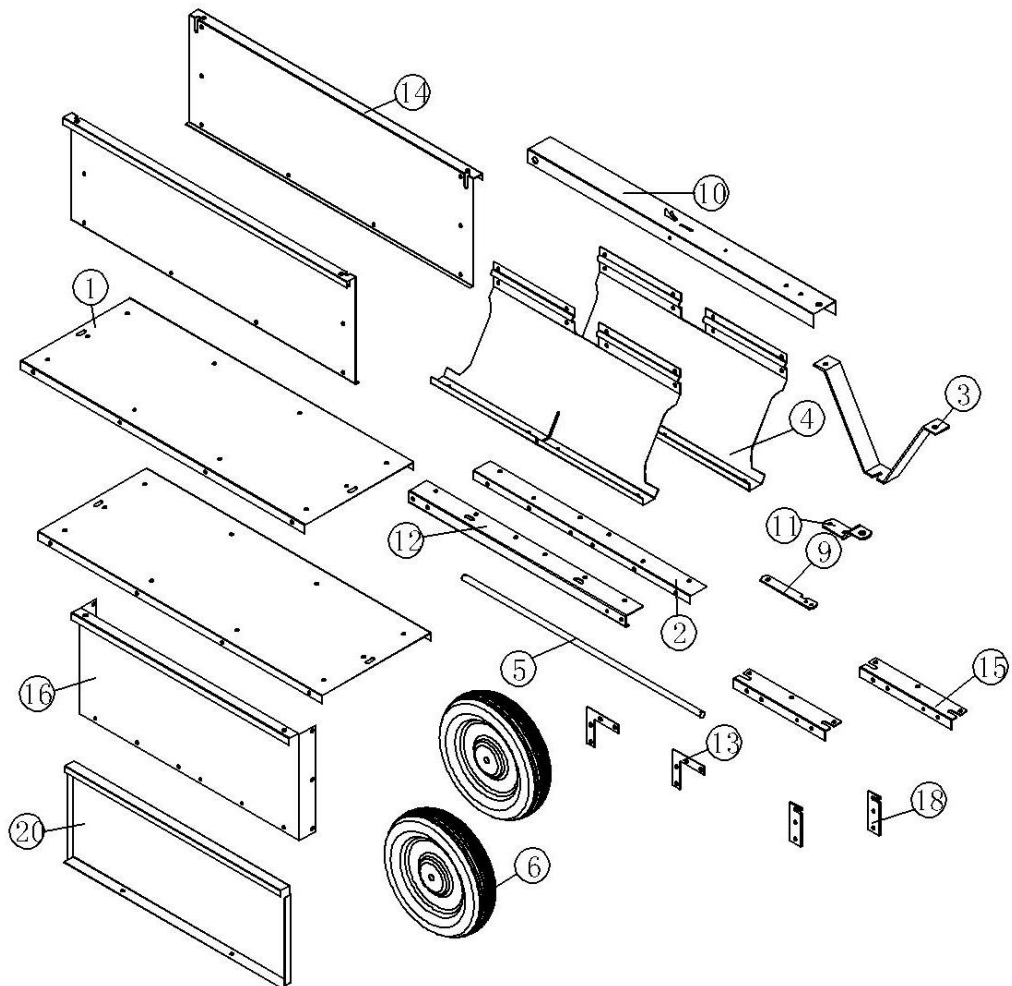
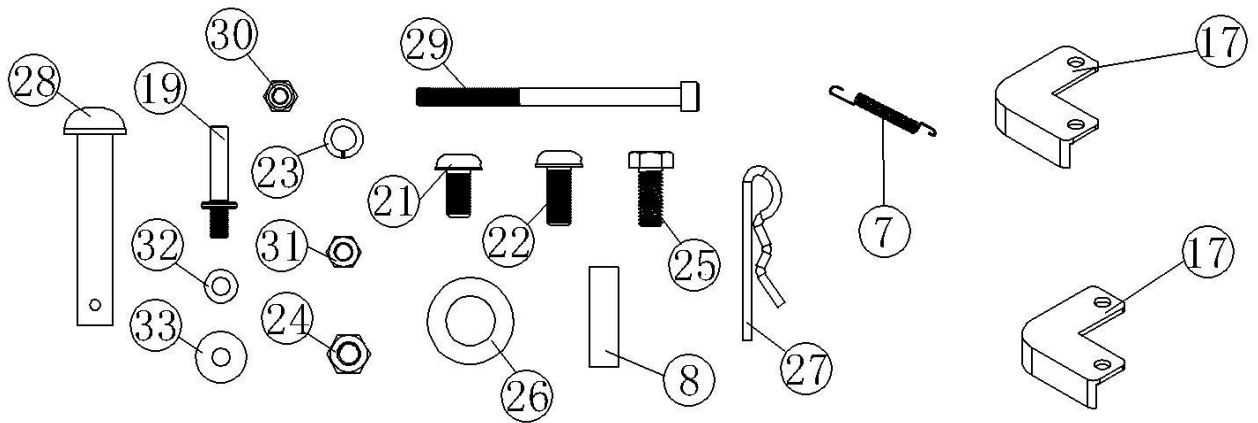
Przed użyciem uważnie przeczytaj instrukcję obsługi!



DANE TECHNICZNE

Ładowność	230 kg
Masa	38 kg
Wymiary	1000 x 800 x 700 mm
Zalecane ciśnienie opon	1,4–1,8 bara
Maksymalne ciśnienie opon	1,8 bara

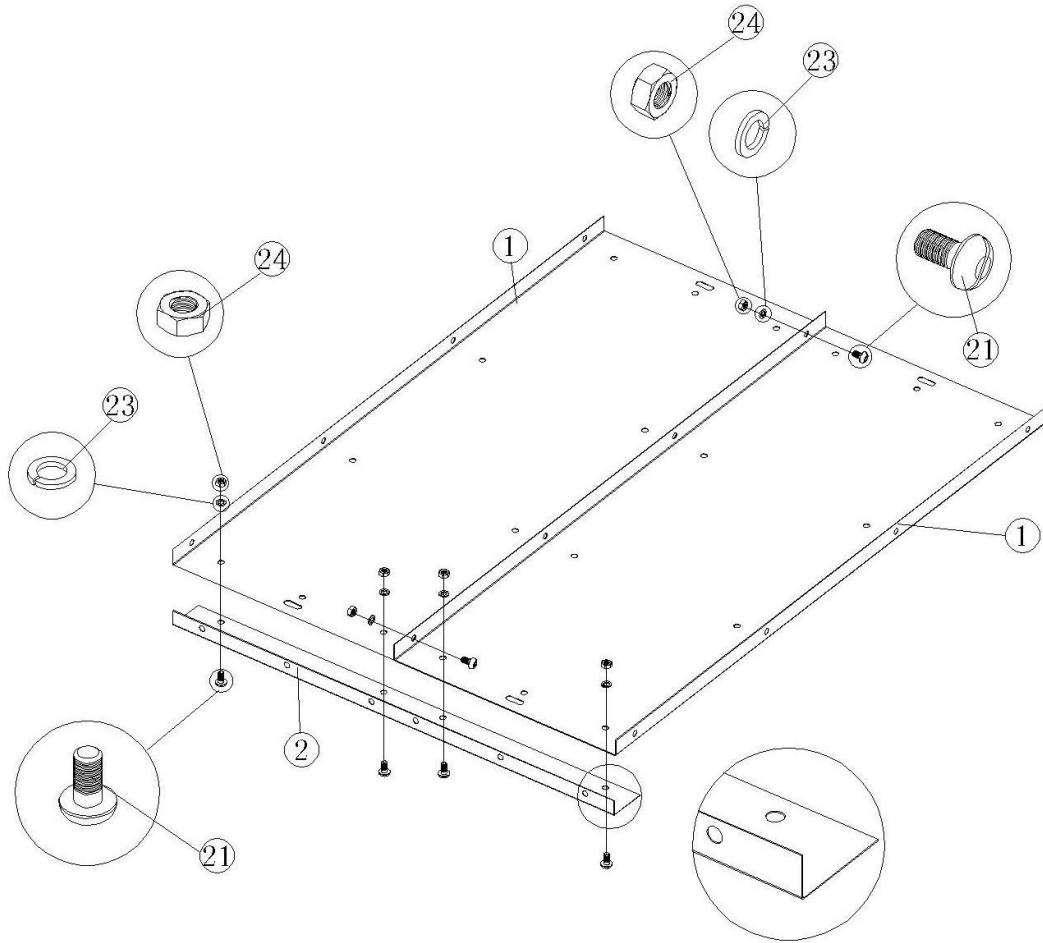
OPIS



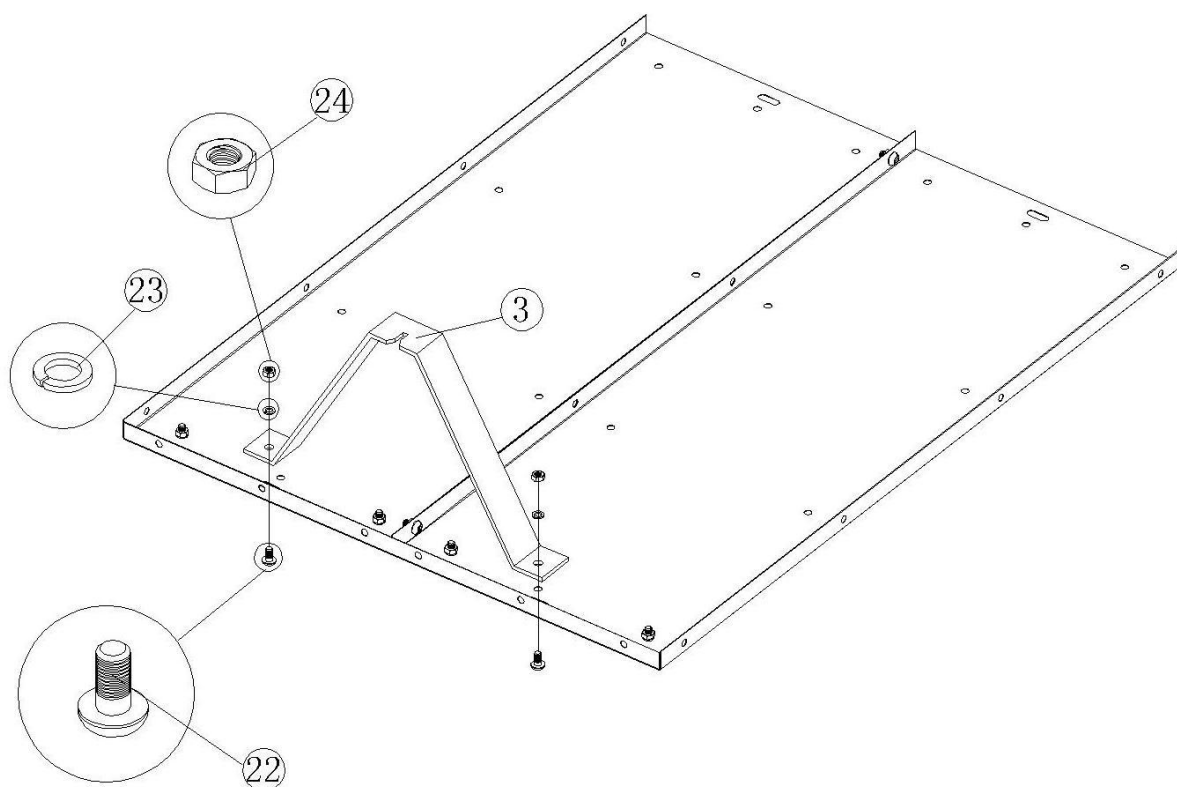
Oznaczenie liczbowe	Opis	Liczba elementów	Oznaczenie liczbowe	Opis elementu	Qty
1	Spód przyczepy	2	18	Zawias klapy tylnej	2
2	Przednia poprzeczka	1	19	Zaczep klapy tylnej	2
3	Podpora dyszla	1	20	Kłapa tylna	1
4	Uchwyt osi	2	21	Śruba M8x16	60
5	Oś	1	22	Śruba M8x20	2
6	Koło	2	23	Podkładka samokontruująca Ø8	72
7	Sprężyna blokady	1	24	Nakrętka sześciokątna M8	72
8	Dystans	2	25	Śruba sześciokątna M8x20	10
9	Blokada przed przewróceniem	1	26	Podkładka płaska Ø16	4
10	Wypust złącza	1	27	Sprzączka	3
11	Złącze	1	28	Kołek złącza	1
12	Tylna poprzeczka	1	29	Śruba sześciokątna M6x90	1
13	Tylny wspornik narożny	2	30	Nylonowa przeciwnakrętka M6	1
14	Panel boczny	2	31	Nakrętka sześciokątna M6	2
15	Tylna poprzeczka narożna	2	32	Podkładka płaska Ø6	2
16	Panel przedni	1	33	Duża podkładka Ø6	1
17	Przednia poprzeczka narożna	2			

MONTAŻ

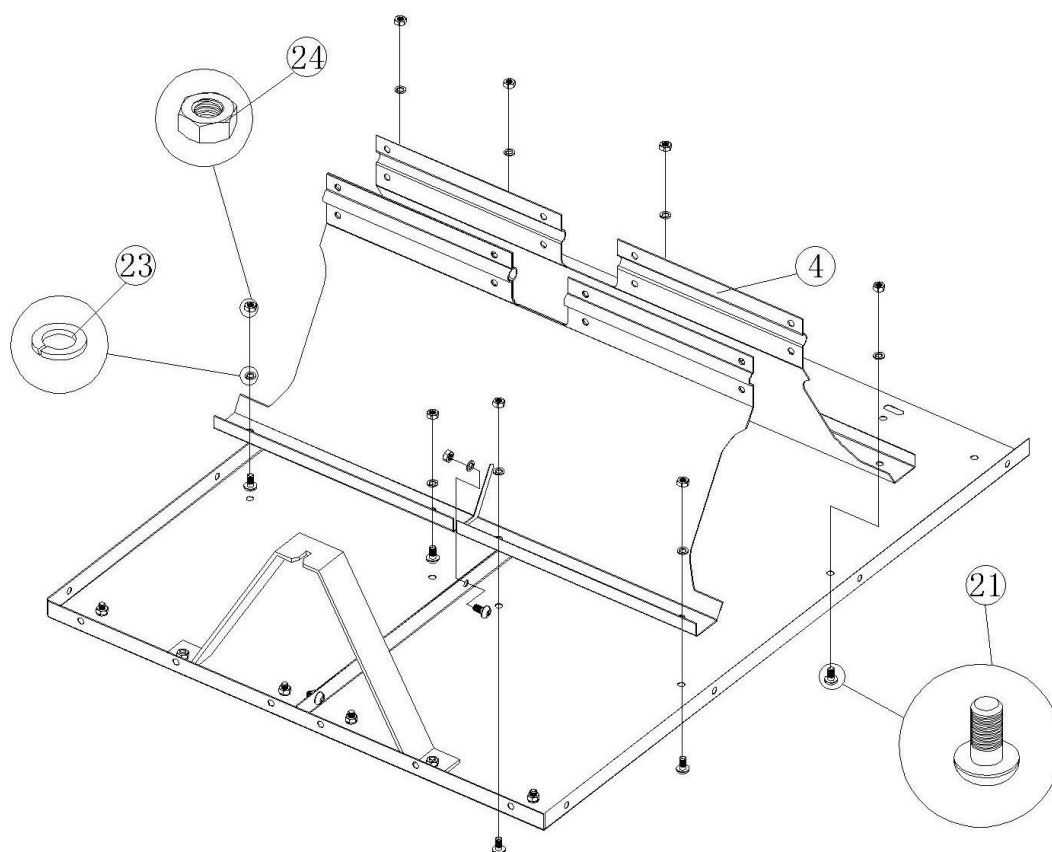
Krok 1: Zamontuj spód i przednią poprzeczkę



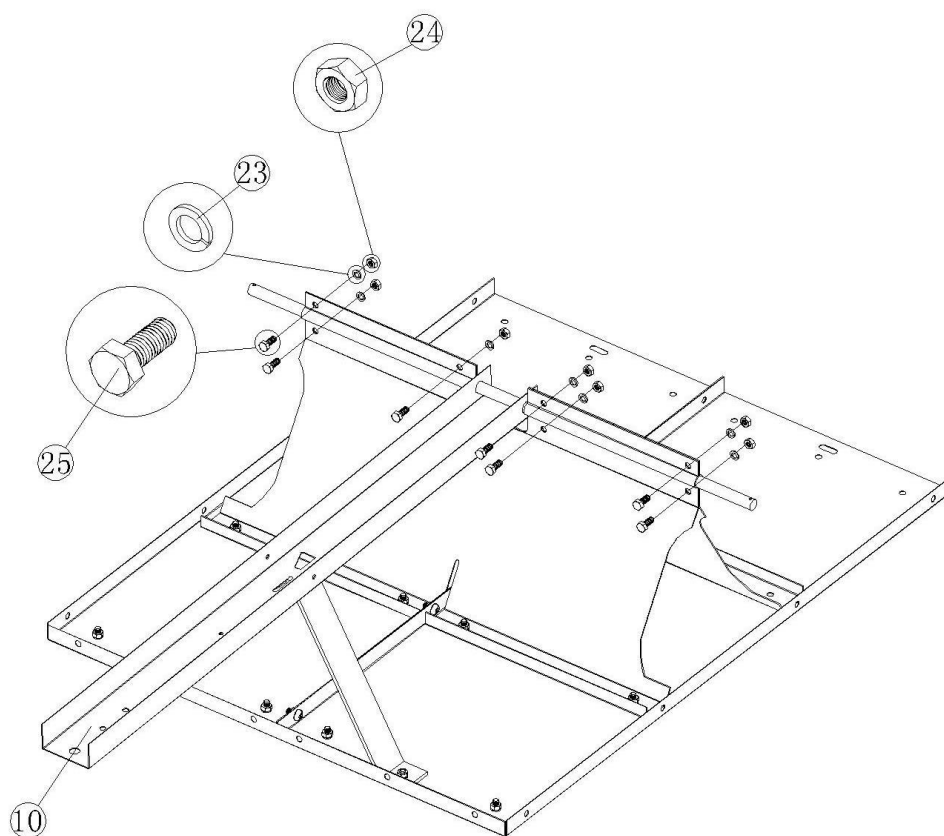
Krok 2: Zamontuj podporę dyszla



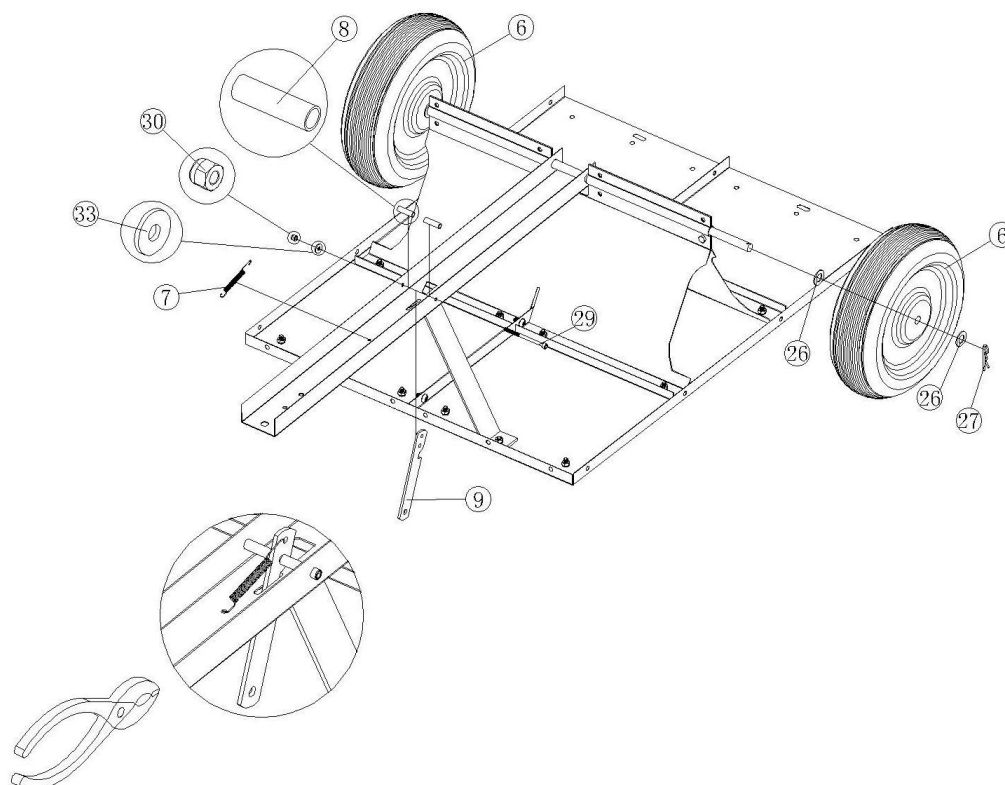
Krok 3: Zamontuj uchwyt osi



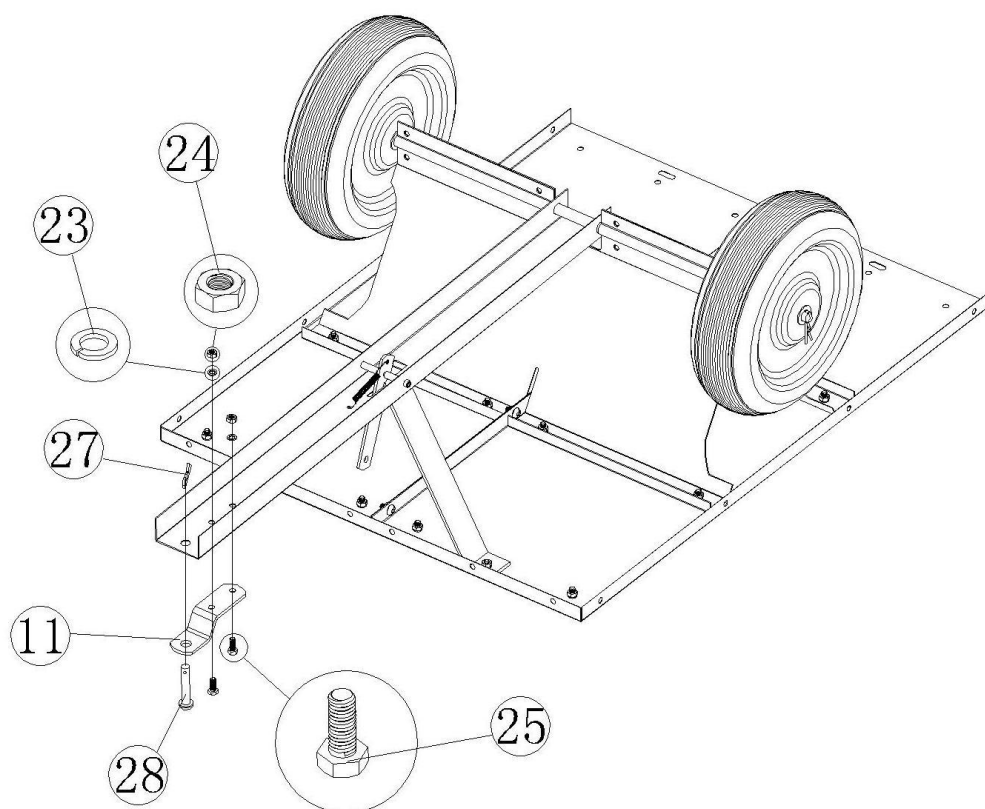
Krok 4: Zamontuj dyszel i oś



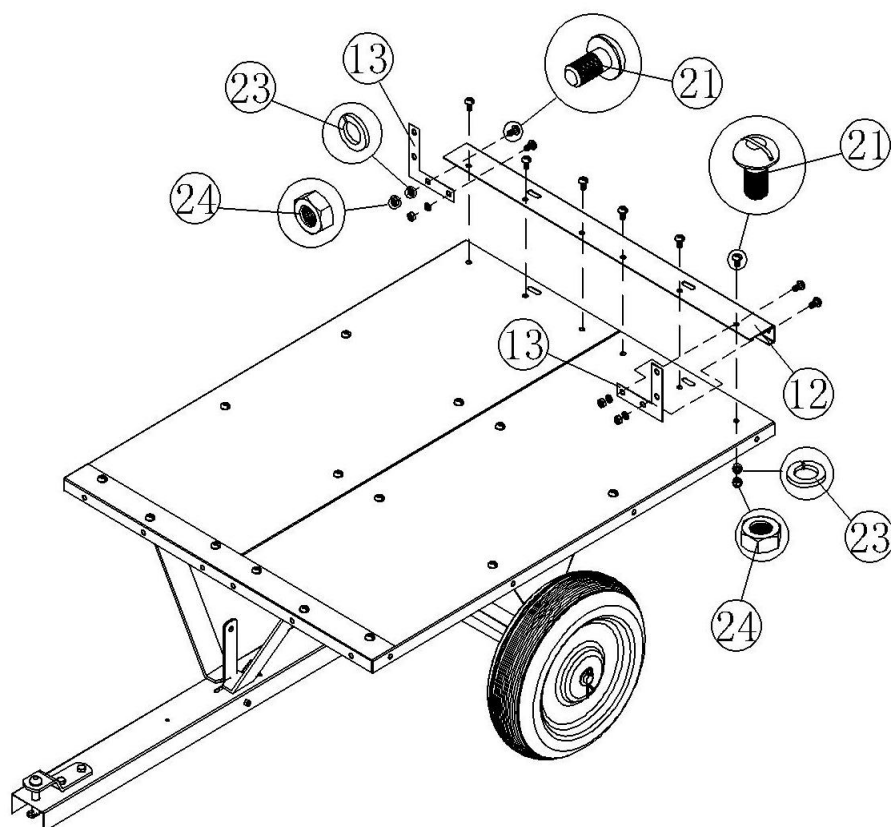
Krok 5: Zamontuj koła i blokadę przed przewróceniem



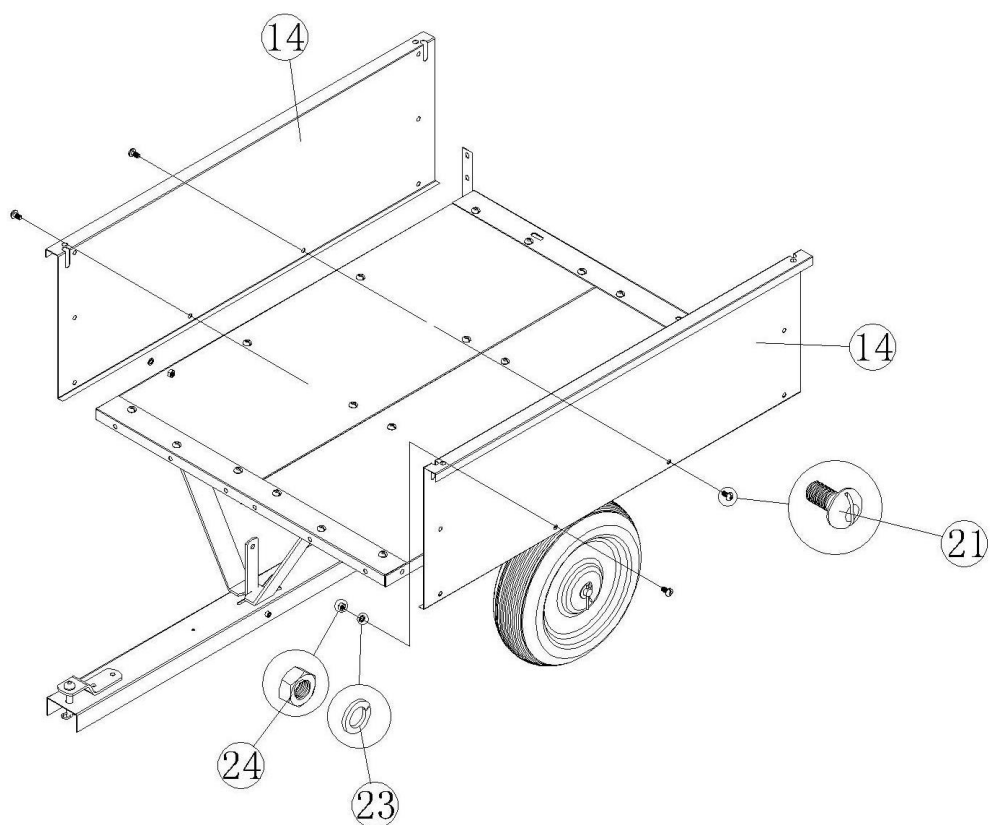
Krok 6: Zamontuj złącze



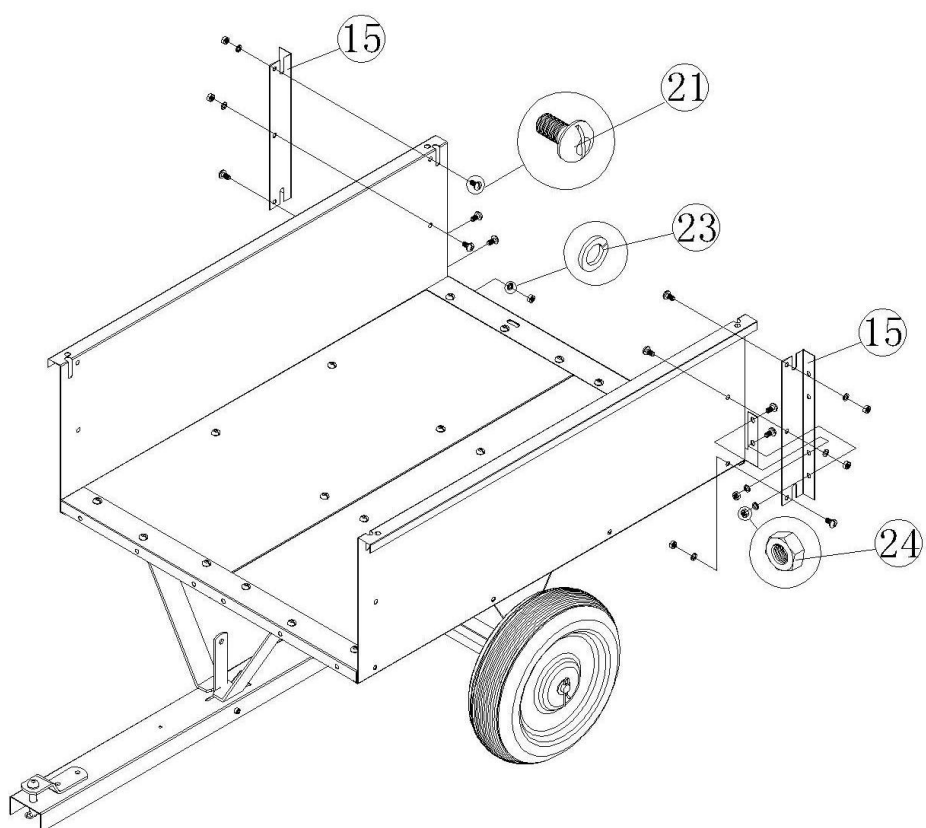
Krok 7: Zamontuj tylną poprzeczkę i kątowniki



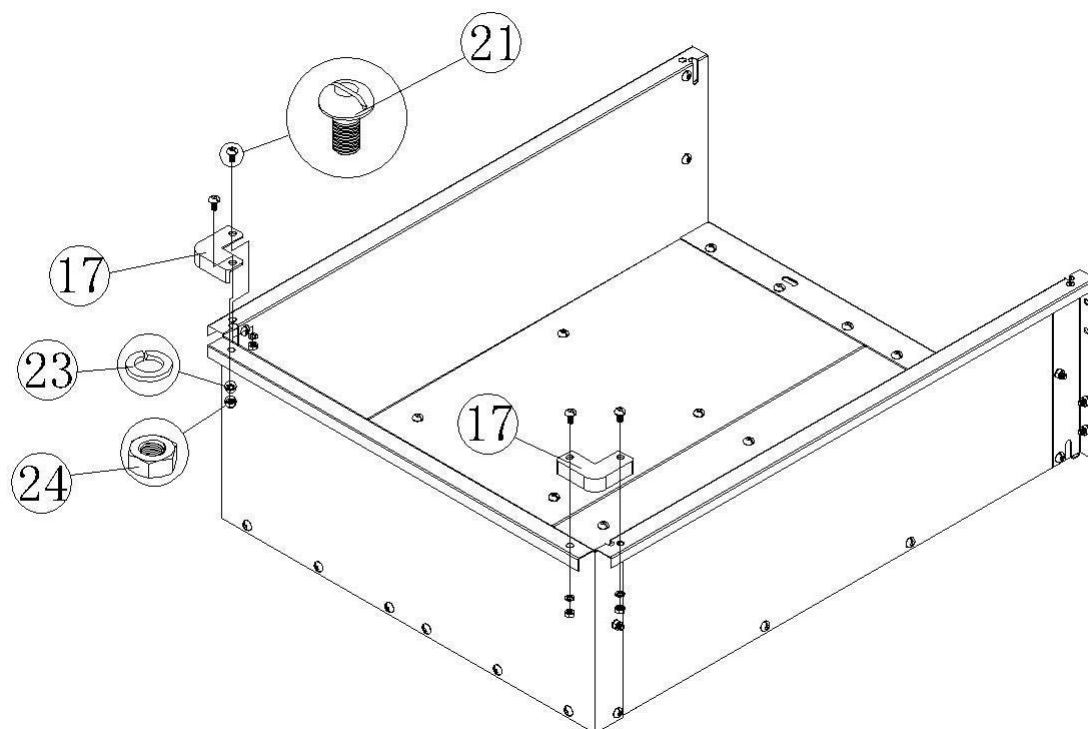
Krok 8: Zamontuj panele boczne



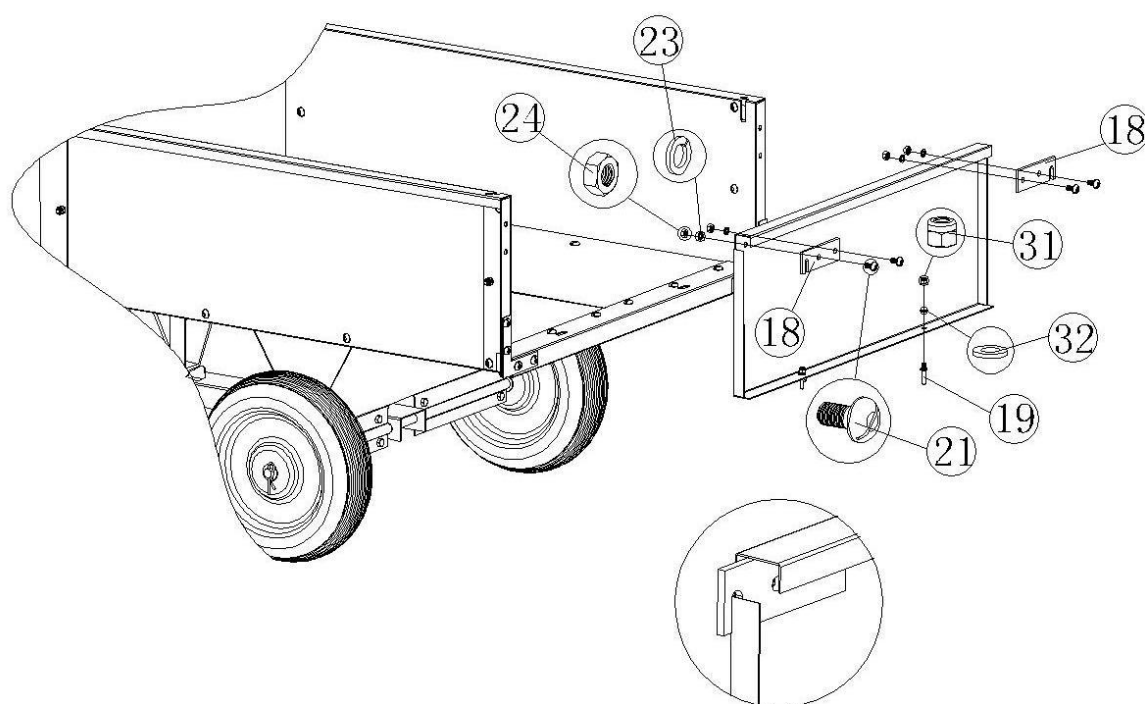
Krok 9: Zamontuj tylne wzmocnienia narożników



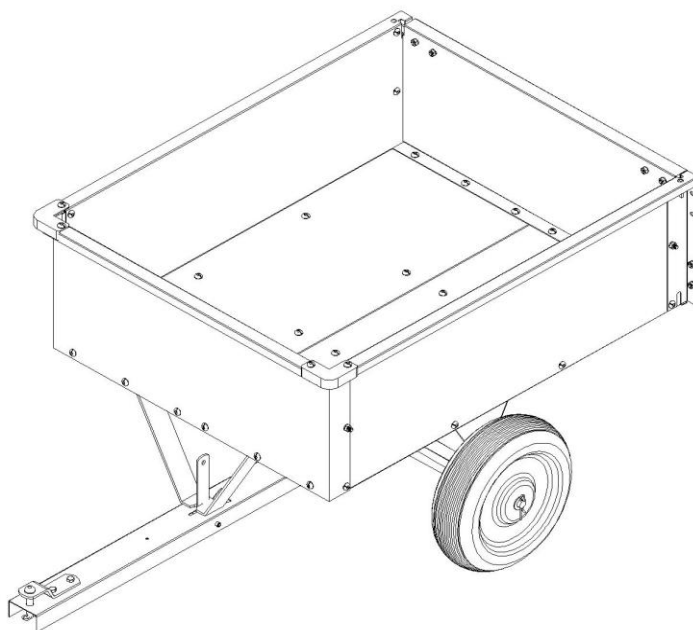
Krok 10: Zamontuj panel przedni i przednie wzmocnienia narożników



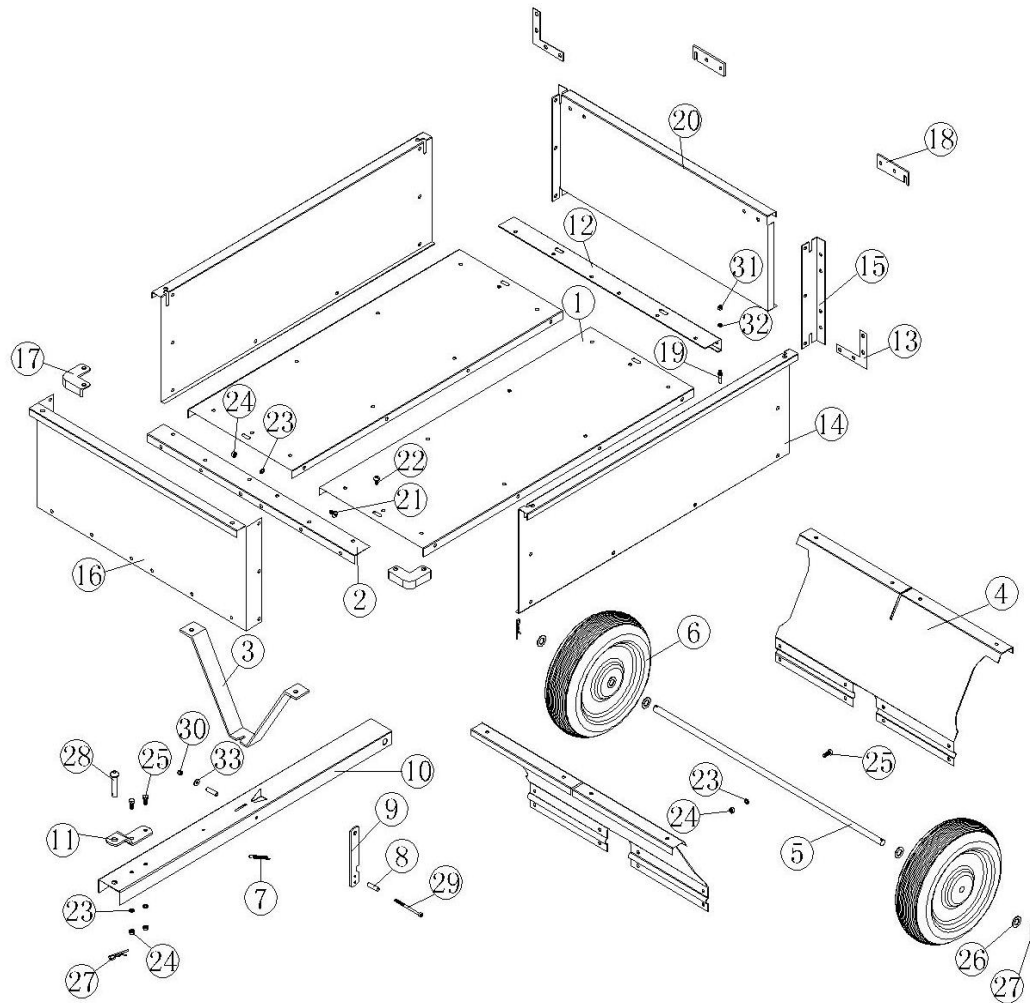
Krok 11: Zamontuj tylną klapę



W tym momencie przyczepa jest gotowa do użytku.



SCHEMAT

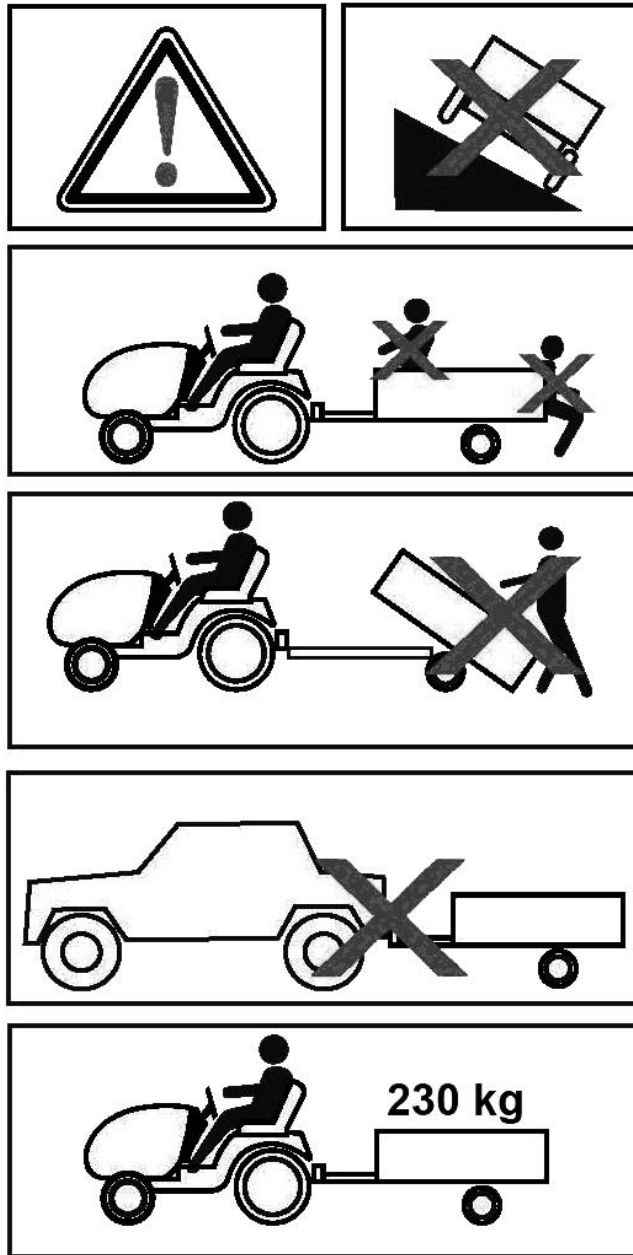


Z zastrzeżeniem prawa do błędów w druku i zmian konstrukcyjnych, które są od nas niezależne. W razie ewentualnych problemów skontaktuj się telefonicznie z naszym działem obsługi klienta pod numerem: 801 600 500.

Jula Poland Sp. z o.o., ul. Malborska 49, 03-286 Warszawa, Polska
www.jula.pl

SAFETY INSTRUCTIONS

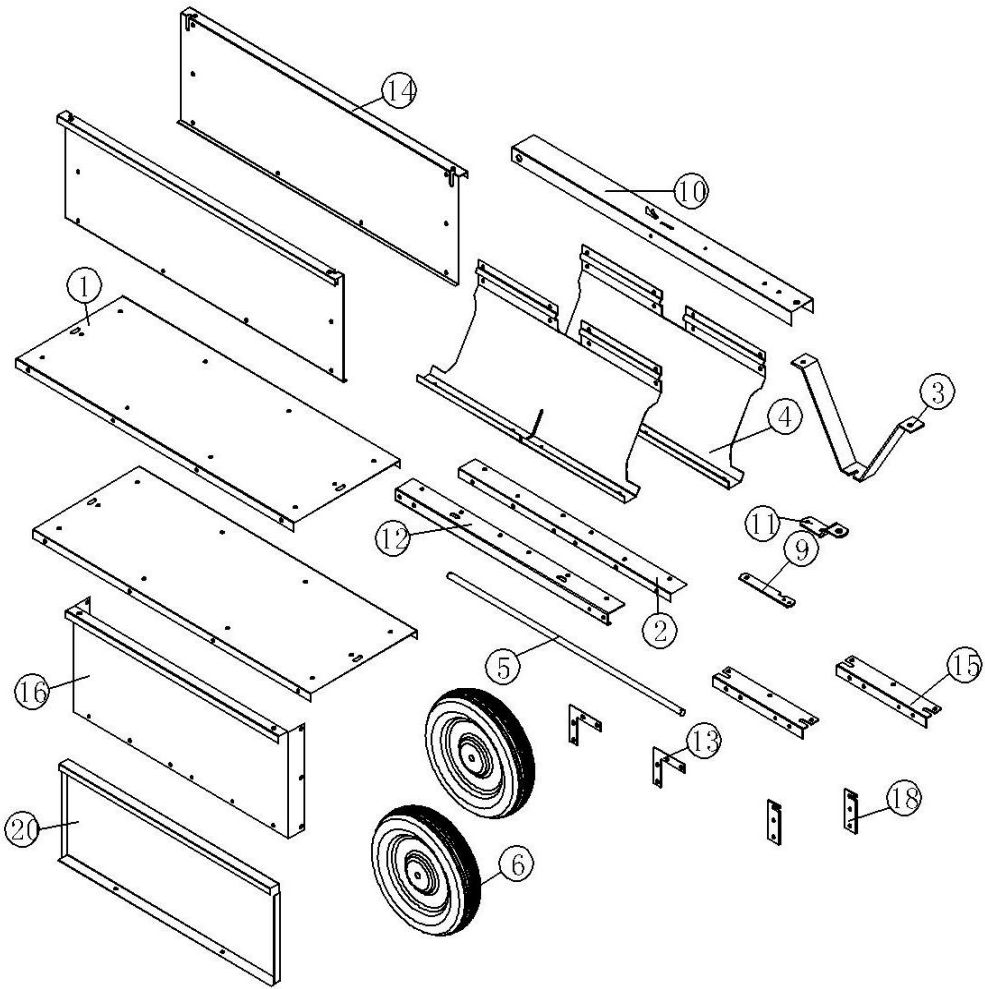
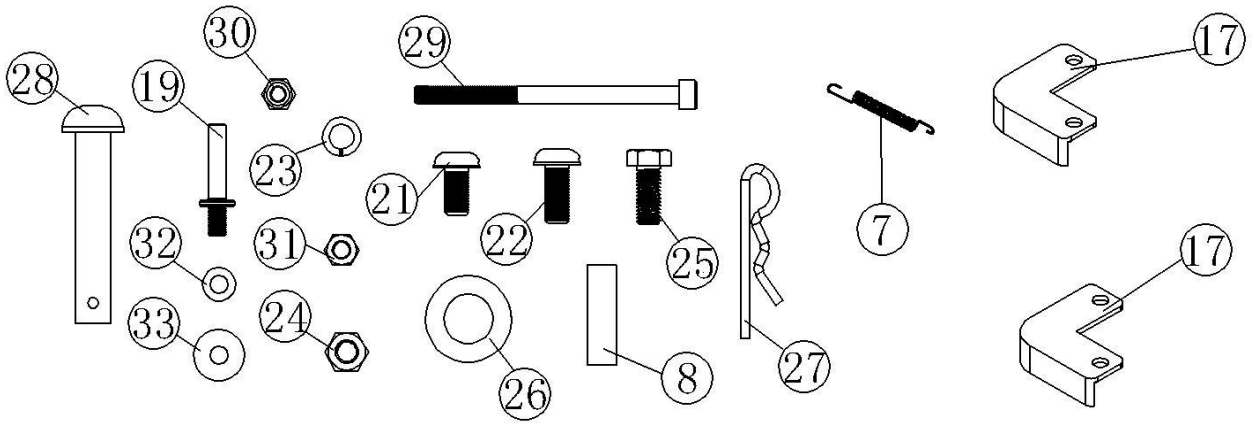
Read these instructions carefully before use



TECHNICAL DATA

Capacity	230 kg
Weight	38 kg
Dimensions	1000 x 800 x 700 mm
Rec. tyre pressure	1.4-1.8 bar
Max. tyre pressure	1.8 bar

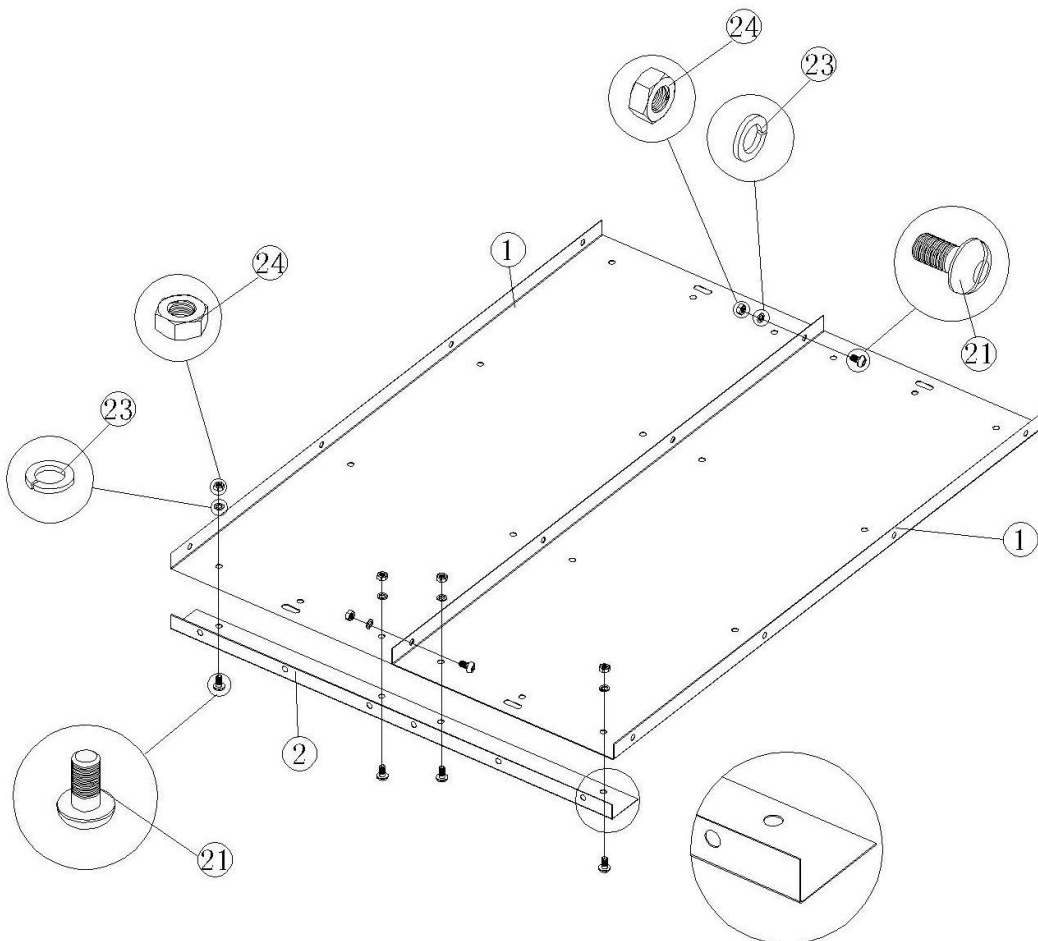
DESCRIPTION



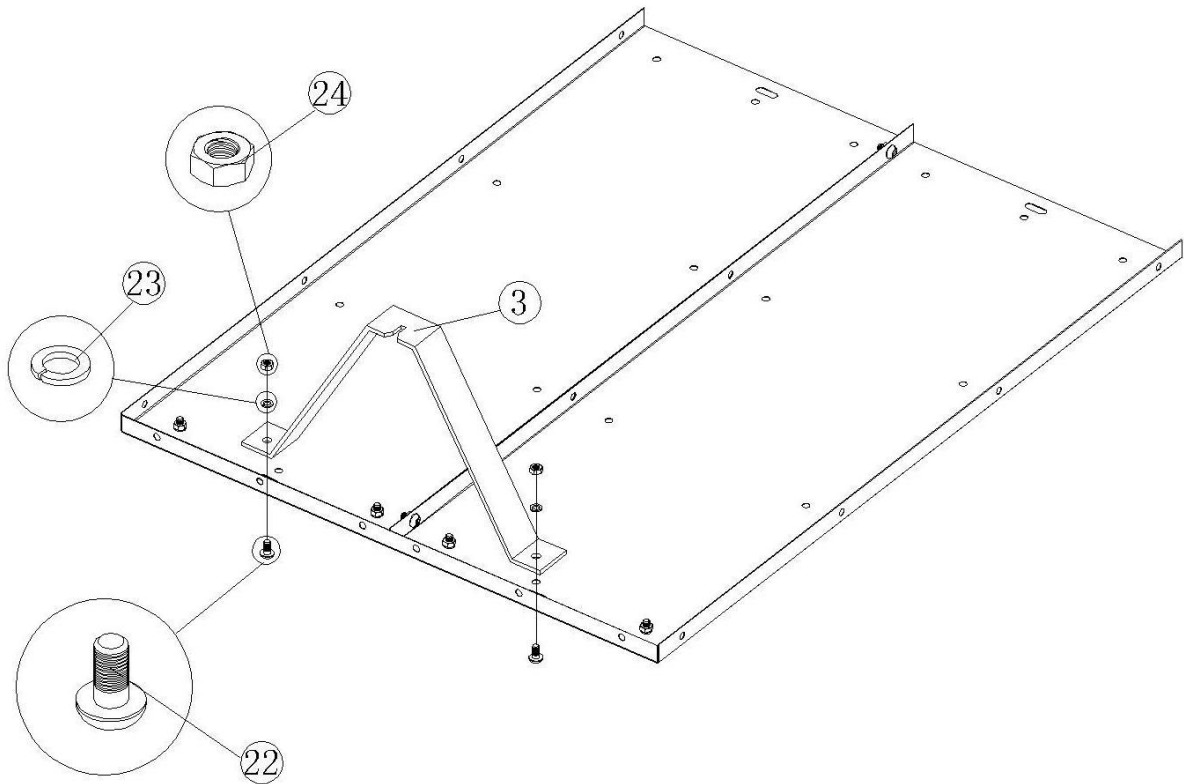
Ref.	Description	Qty	Ref.	Description	Qty
1	Bottom panel	2	18	Tailgate latch	2
2	Front cross brace	1	19	Tailgate pin	2
3	Tongue support	1	20	Tailgate	1
4	Wheel axle support	2	21	Screw M8x16	60
5	Wheel axle	1	22	Screw M8x20	2
6	Wheel	2	23	Lock washer Ø8	72
7	Latch spring	1	24	Hex nut M8	72
8	Spacer	2	25	M8x20 hex bolt	10
9	Tongue latch	1	26	Flat washer Ø16	4
10	Hitch tongue	1	27	R pin	3
11	Hitch pin bracket	1	28	Hitch pin	1
12	Rear cross brace	1	29	M6x90 hex bolt	1
13	Rear corner bracket	2	30	M6 nylon lock nut	1
14	Side panel	2	31	M6 hex nut	2
15	Rear corner brace	2	32	Flat washer Ø6	2
16	Front panel	1	33	Big washer Ø6	1
17	Front corner brace	2			

ASSEMBLY

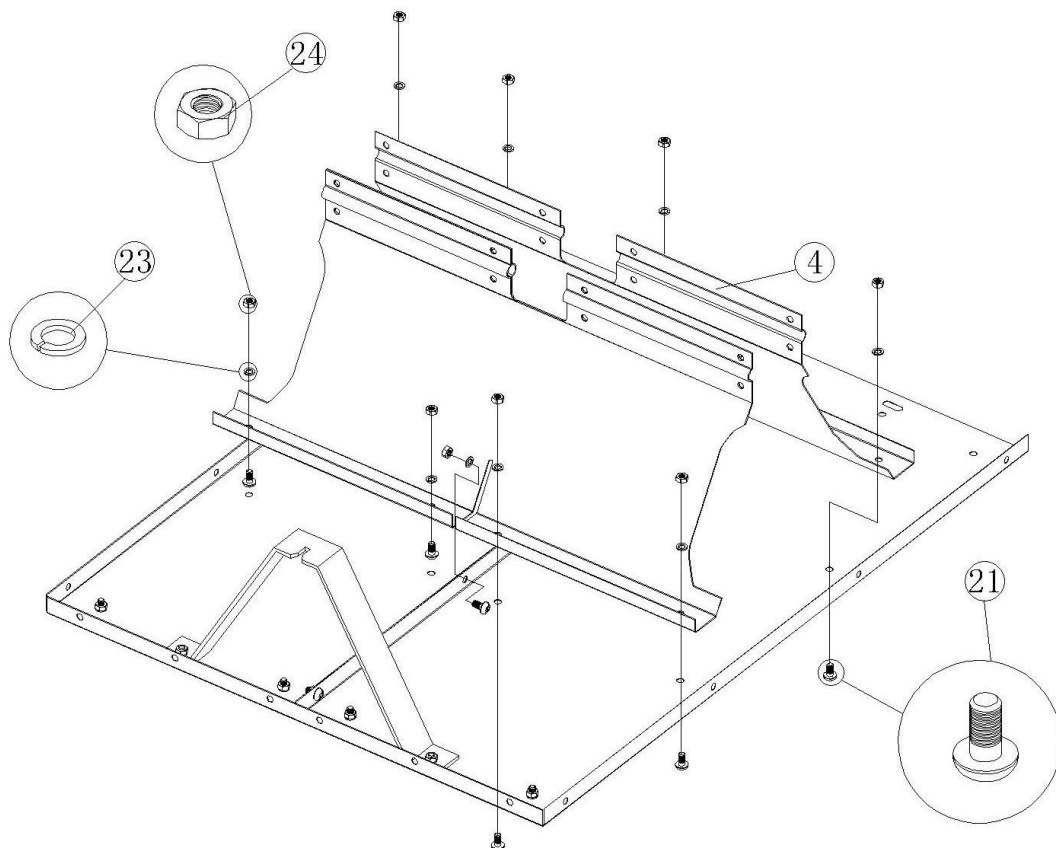
Step 1: Fit the bottom and front cross brace



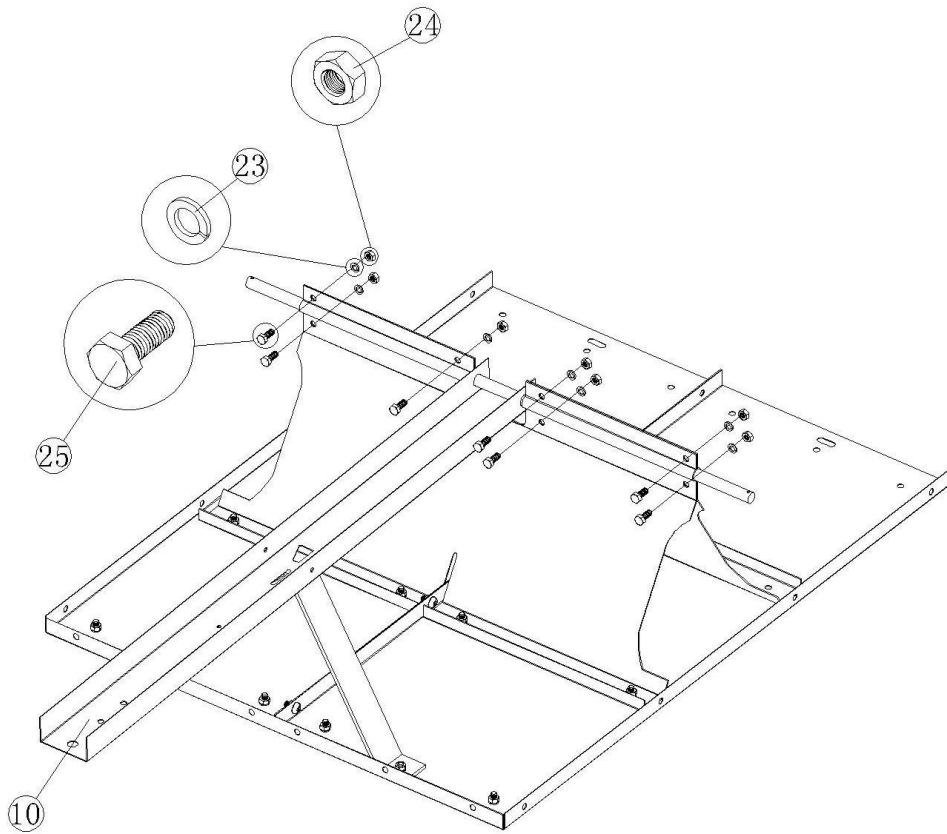
Step 2: Fit the tongue support



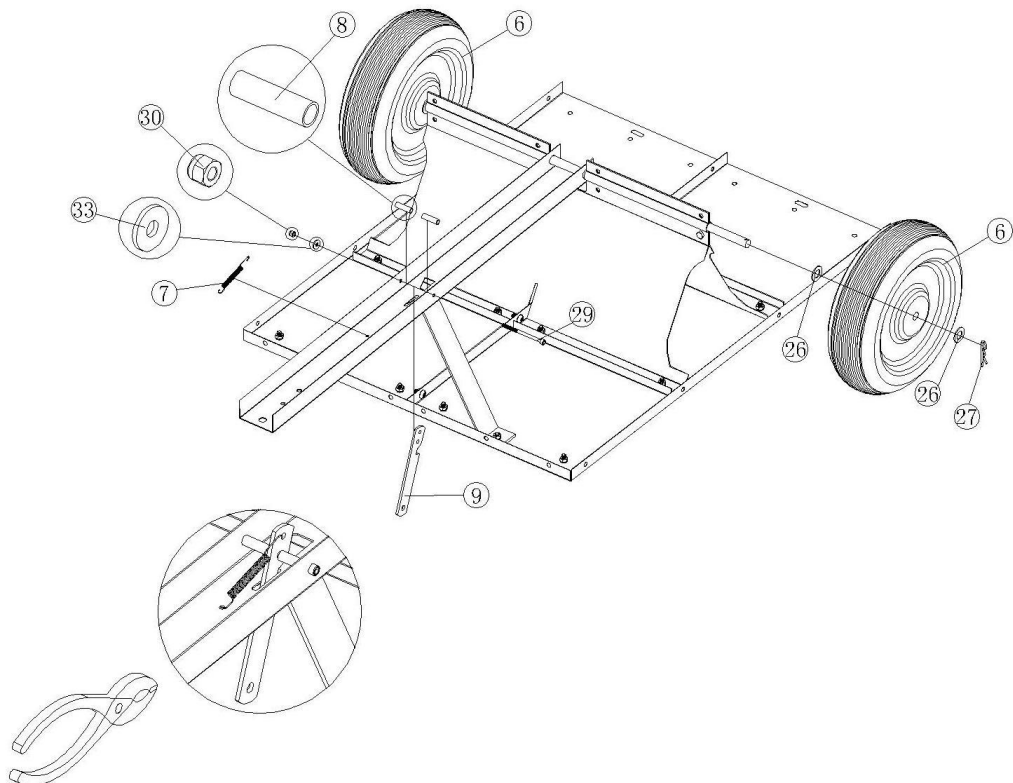
Step 3: Fit the wheel axle supports



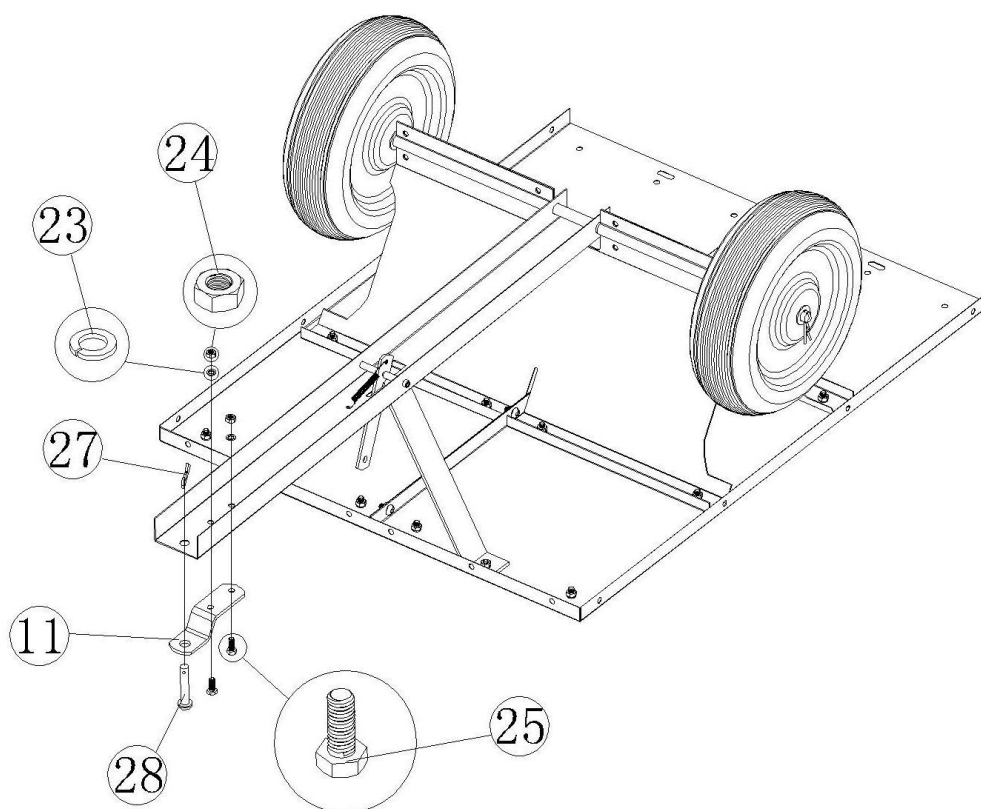
Step 4: Fit the hitch tongue and wheel axle



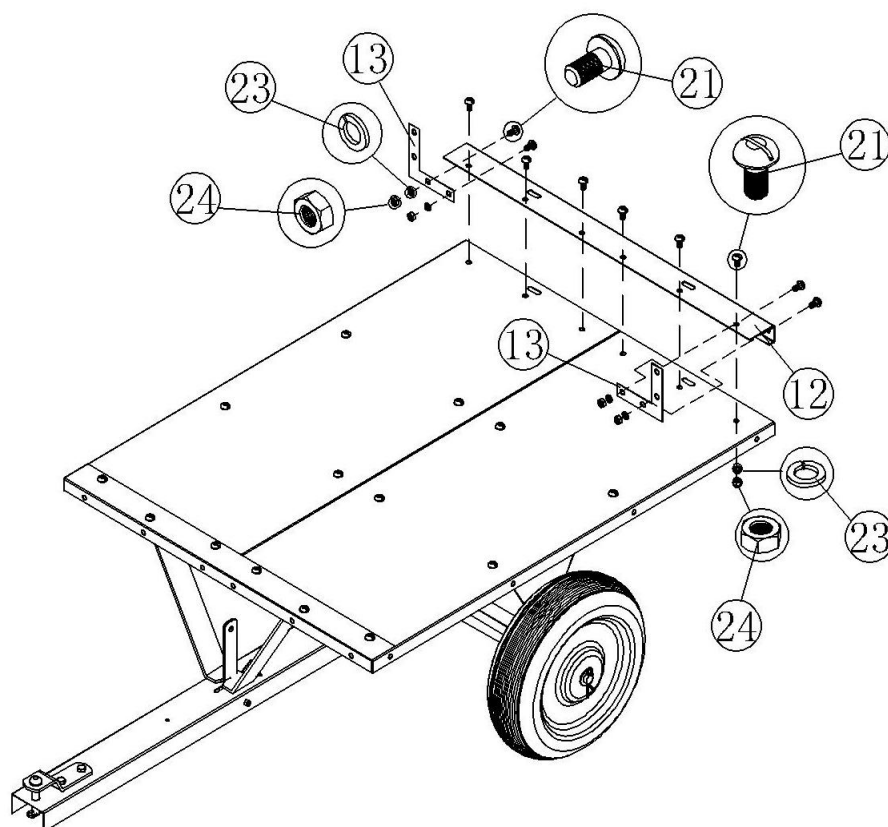
Step 5: Fit the wheels and tongue latch



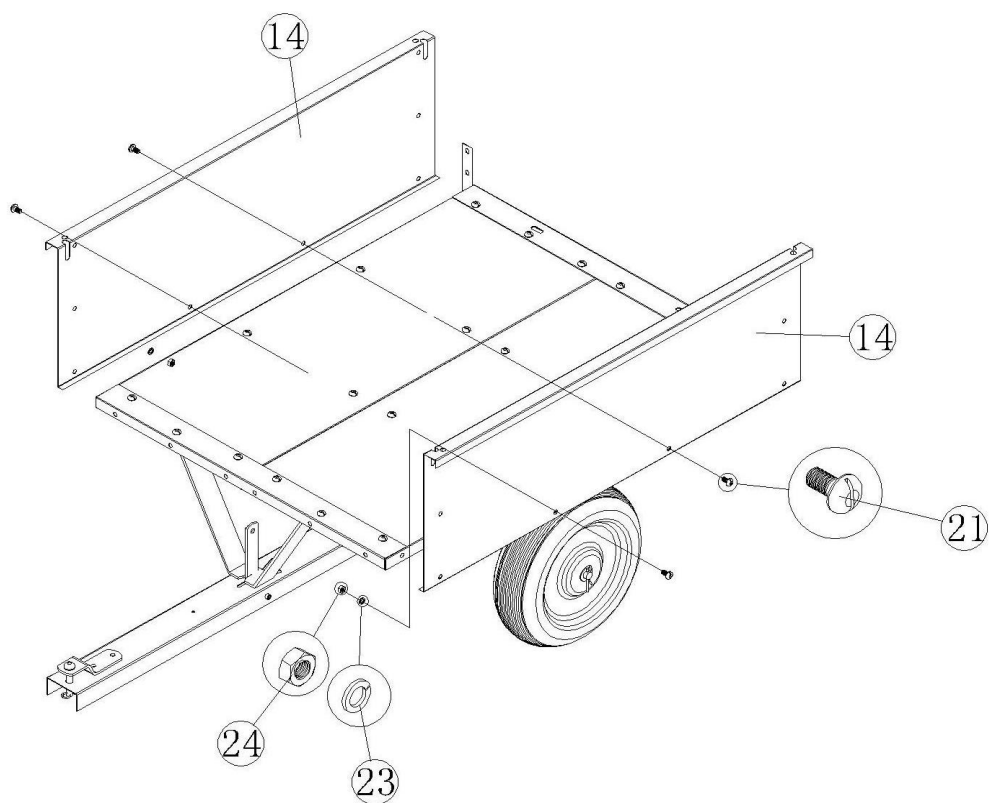
Step 6: Fit the hitch pin bracket



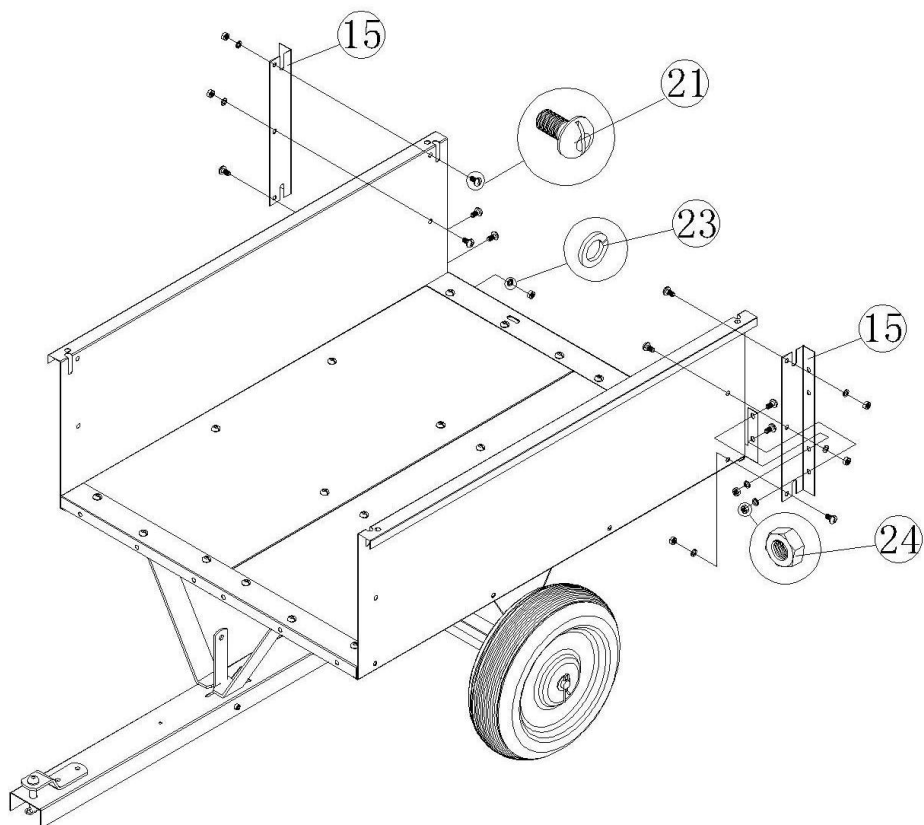
Step 7: Fit the rear cross brace and angle support



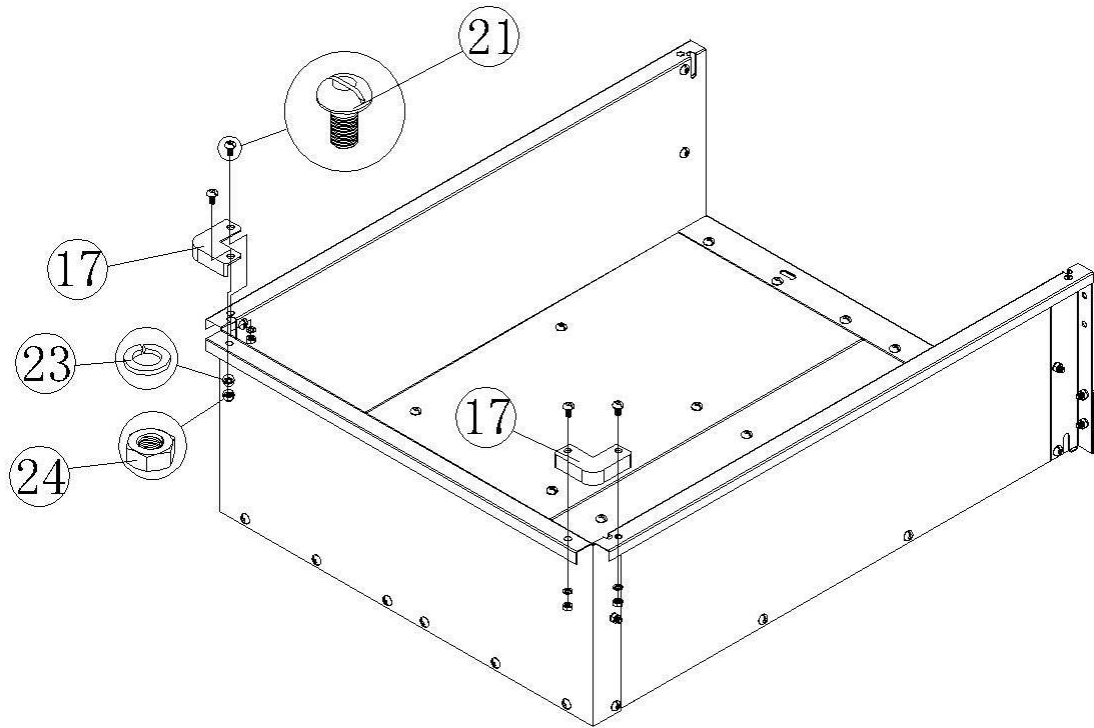
Step 8: Fit the side panels



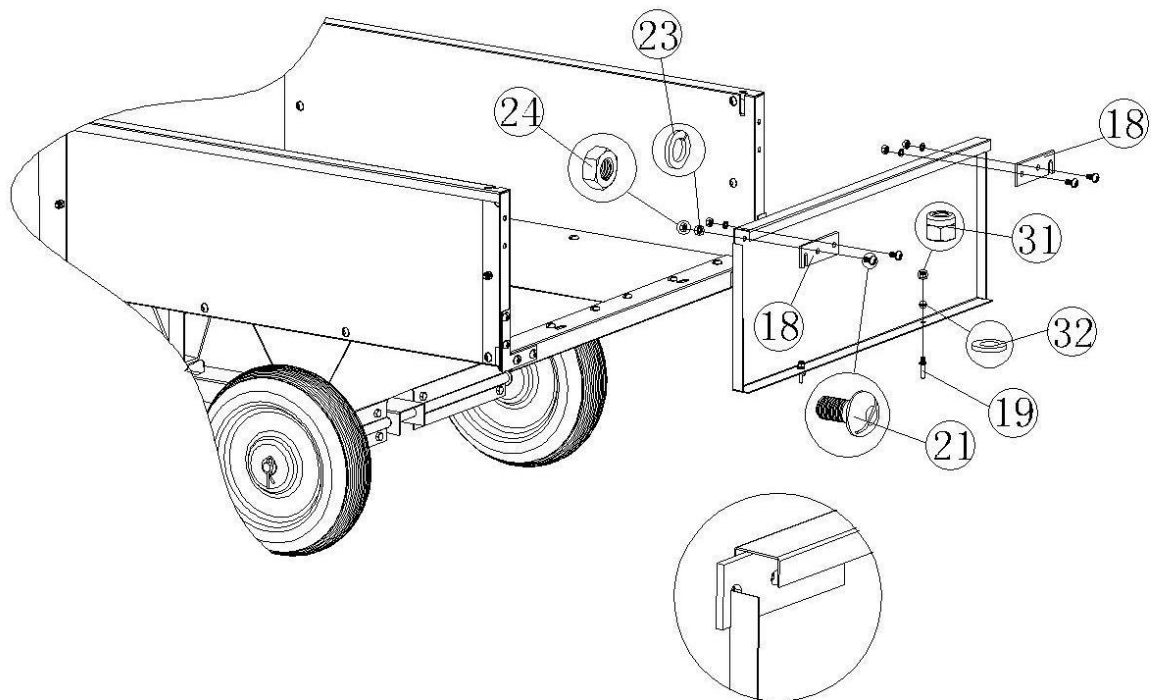
Step 9: Fit the rear corner plate



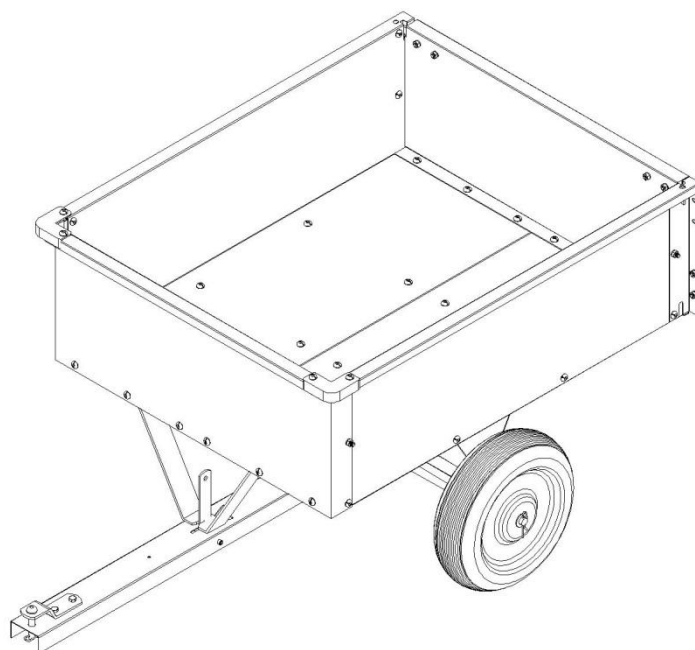
Step 10: Fit the front panel and front corner plate



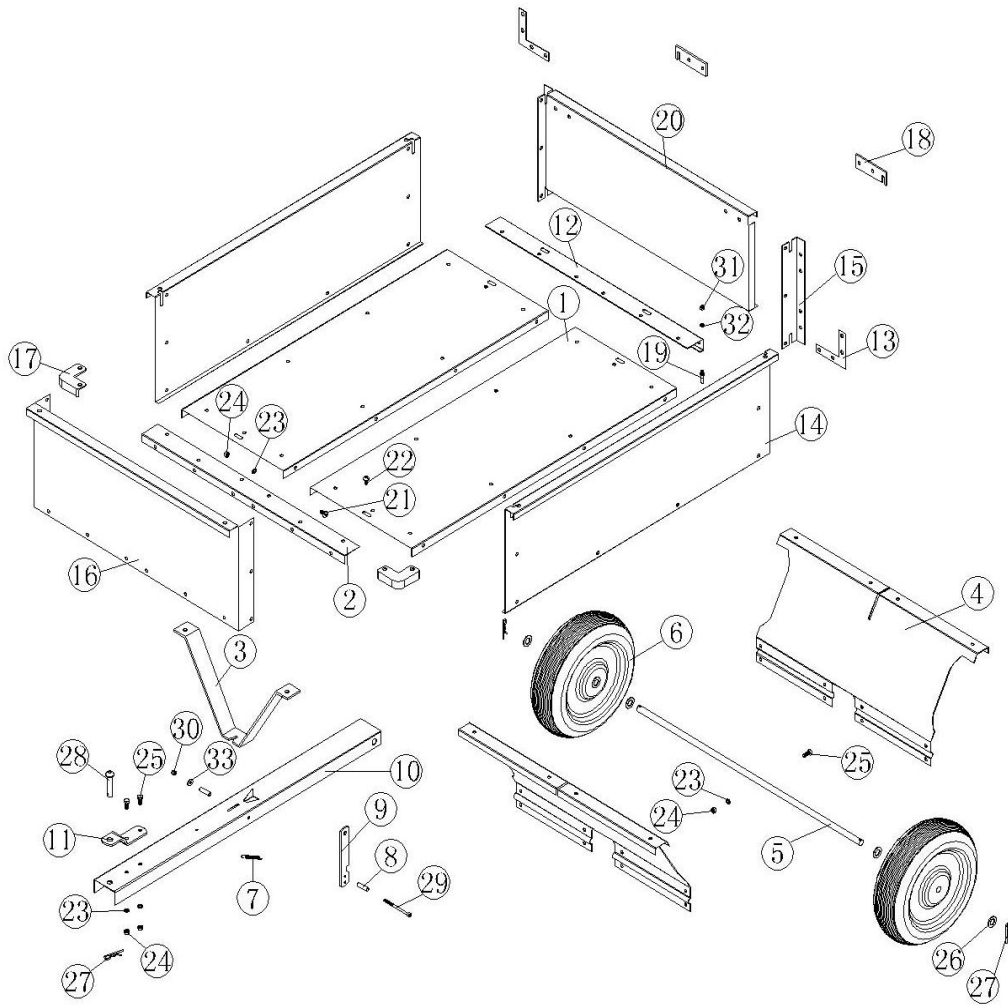
Step 11: Fit the rear tailgate



The trailer is now fully assembled and ready for use.



EXPLODED VIEW



Subject to printing errors and design changes over which we have no control. In the event of problems, please contact our service department. www.jula.com